

APPENDIX C
ONONDAGA LAKE WATERSHED RESTORATION PROJECTS
SCOPE OF WORK¹

**1. MAPLE BAY IN-LAKE HABITAT ENHANCEMENT PROJECT -
Improvements to 38 Acres of In-Lake Shoreline and Shallow Water Habitat**

Project Location: The Maple Bay In-Lake Habitat Enhancement Project shall consist of enhancement work to be completed in approximately 38 in-lake acres located in the northwestern portion of Onondaga Lake. See Figure A.

Project Description: Restoration of approximately 38 in-lake acres shall include work to enhance the lake shoreline and the shallow water habitat through substrate enhancements, shallow water wetland plantings, seedings, and structures, shoreline invasive species control efforts, and native plantings. The shoreline and shallow water enhancement work shall be conducted by Honeywell pursuant to a Restoration Work Plan developed in accordance with the requirements of Paragraph 21 of the Consent Decree. Habitat conservation shall be achieved by Onondaga County in accordance with the requirements set forth in Paragraphs 35-36 of the Consent Decree.

Shoreline Enhancement: Work to enhance the lake shoreline shall occur in approximately 3.8 acres, spanning from 10 feet onshore out to an in-lake water depth of approximately 0.5 feet, and shall include invasive species (e.g., *Phragmites*) control efforts and native species plantings. Patches of *Phragmites* along the shoreline shall be treated with herbicides before planting with native species. All treatments will be made in accordance with Onondaga County's policies regarding the use of herbicides, a copy of which is attached hereto and incorporated herein. Those areas where *Phragmites* has been treated shall be seeded with a native wetland seed mix and a cover crop selected for site specific conditions from seed mixes shown in Table 1, both at a rate of 30 lb/acre. The area from the shore to water depth of up to 0.5 feet (approximately 2.5 acres) and select low lying areas onshore where *Phragmites* treatment occurred (up to 0.25 acres) shall be seeded with wild rice that will be distributed at an approximate rate of 35 lbs/acre. The intent of the initial wild rice seeding is to establish a self-sustaining community of wild rice to enhance existing habitat in Maple Bay. The area from the shore to water depth of up to 0.5 feet (approximately 2.5 acres) also shall be planted with native emergent wetland vegetation with native species selected for site specific conditions from plantings shown on Table 2. Approximately 3,000 emergent plants shall be installed across the entire 2.5 acres; plantings shall be focused in areas where highest survival is expected, such as small protected embayments. The intent of the emergent and floating vegetation planting is to establish a self-sustaining floating and emergent vegetation community to enhance existing habitat in Maple Bay.

Shallow Water Enhancements: Shallow water enhancements shall be made in approximately 34.4 in-lake acres located from a water depth of 0.5 feet to a water depth of up to 7.5 feet.

¹ All references to acreage and miles are ± estimates.

Material to create 3 cobble bars, each measuring approximately 300 feet long, approximately 2 feet wide at the top, and approximately 2 feet high shall be installed roughly parallel to the northern most shore at an approximate water depth of 2 feet, the goal being for the structures to be close to or somewhat above the water surface at an average growing season water elevation (May-October, 362.8 feet NAVD). Four downed trees with a minimum 6-inch diameter trunk at the base with intact branches on one side shall be placed at or near the bottom of each cobble bar so that the trees are roughly perpendicular to the shore (for a total of 12 downed trees). Wild rice and floating aquatic vegetation shall be introduced in the shallow water areas (approximately 16 acres), with wild rice seed to be distributed at an approximate rate of 35 lbs/acre (approximately 560 lbs total) between the shoreline and water depth up to 3.5 feet, with a focus on seed distribution in calmer protected areas. A minimum of 7,300 propagules of native floating aquatic species, selected for site specific conditions from plantings shown in Table 2, shall be installed in calmer protected areas from the shoreline out to the 3.5-foot water depth, with an approximate average spacing of 10 feet. A minimum of 700 boulders, measuring approximately 12 inches to 36 inches in diameter each, shall be installed in clusters consisting of 10 to 20 boulders per cluster between a water depth of approximately 2 to 7.5 feet. Sixteen “L” shaped gravel reefs (in total comprising approximately 300 cubic feet of material) shall be installed. Development of the final structure placement plan, to be included as part of the Restoration Work Plan, shall be guided by existing lake bottom data.

Project Monitoring and Maintenance: Project monitoring and maintenance for planted/seeded areas shall be conducted by Honeywell for 5 consecutive years, with year one of maintenance and monitoring beginning immediately following the first growing season after project planting/seeding is completed. Project maintenance requirements shall include herbicide treatment to control *Phragmites*, and reseeding and/or replanting of wild rice, emergent or floating vegetation as needed to achieve the Performance Criteria below using native species from Table 2 that are performing well at the site or other native species as approved by the Trustees. All treatments will be made in accordance with Onondaga County’s policies regarding the use of herbicides (copy attached). If the Performance Criteria below (excluding in-lake habitat structures) are not achieved after 5 years, Honeywell will coordinate with the Trustees to perform additional, agreed-upon restoration and monitoring work to achieve the Performance Criteria or utilize the Consent Decree’s contingency provision at ¶ 30.

Performance Criteria:

Areas subject to *Phragmites* control and related work:

- *Phragmites* shall not exceed 20 percent by areal coverage.
- Areal coverage by native wetland species shall be at least 40 percent.
- There shall be at least 20 native wetland species represented.

Areas subject to Wild Rice Seeding:

The intent of the wild rice seeding is to establish a self-sustaining community of wild rice to enhance existing habitat in Maple Bay. Wild rice is an annual plant and will re-establish each year from seeds set (or sown) the prior year, and ultimately, site-specific conditions will dictate where or whether wild rice will persist in Maple Bay. Honeywell shall conduct yearly compliance monitoring and maintenance for 5 years from the initial seeding to document the

presence and extent of wild rice in seeded areas. Honeywell shall seed selected areas of the Maple Bay In-Lake Project Area with an additional approximately 560 pounds of wild rice seed for two additional consecutive years following the initial seeding to maximize the likelihood of wild rice establishment (i.e. three consecutive years of seeding total). The results of the previous year's monitoring will be used to select areas to be seeded in years two and three. Notwithstanding the Performance Criteria for wild rice, if annual monitoring demonstrates that wild rice has not established a viable population by monitoring years four and/or five, then Honeywell will discuss the results with the Trustees to decide if, or how much, additional seeding is warranted.

Areas subject to emergent or propagules of floating vegetation planting:

The intent of the emergent and floating vegetation planting is to establish a self-sustaining floating and emergent vegetation community to enhance existing habitat in Maple Bay. Honeywell shall conduct yearly compliance monitoring and maintenance following the planting of emergent plants or propagules of floating plants to document that plants remain present during monitoring years two through five. Notwithstanding the Performance Criteria for emergent or propagules of floating vegetation, if annual monitoring demonstrates that this vegetation is not present, then Honeywell will discuss the results with the Trustees to decide if site specific conditions are not conducive to establishing this vegetation and whether additional plantings are, therefore, warranted.

In-Lake Habitat Structures:

Notwithstanding the above monitoring and maintenance requirements, in the first period between September 1 and November 30 following the complete implementation of said structures, a sampling of 20 percent of the total of cobble/gravel reefs and cobble bars, including a sample of each type of structure, shall be conducted through visual monitoring to verify that the sampled structures remain visible above the lake bottom in a manner consistent with contributing to topographic diversity and habitat value; sampled cobble bars shall remain visible at a minimum of 1 foot above the lake bottom and sampled gravel reefs shall remain visible at a minimum of ½ foot above the lake bottom. If these Performance Criteria are satisfied, Honeywell may petition the Trustees to be released from further natural resource damage (NRD)-only monitoring and maintenance requirements for the in-lake habitat structures. If the Performance Criteria are not met, Honeywell shall coordinate with the Trustees to develop and implement a more expansive sampling protocol and/or to modify or relocate the structures to achieve the Performance Criteria.

2. MAPLE BAY ONSHORE HABITAT ENHANCEMENT PROJECT - Conservation of 102 Acres of Habitat; Enhancements to 24 Acres of Wetlands; Vernal Pool Creation

Project Location: The Maple Bay Onshore Habitat Enhancement Project shall consist of enhancement work to be completed in approximately 24 acres of wetlands and conservation of approximately 102 inland acres (comprising a mix of wetland and upland areas) located in the northwestern portion of Onondaga Lake. See Figure B.

Project Description: The Maple Bay Onshore Habitat Enhancement Project shall consist of work to enhance the onshore habitat through wetland enhancements, vernal pool creation, and invasive species control and native plant establishment. The requisite work for the Maple Bay Onshore Habitat Enhancement Project shall be conducted by Honeywell pursuant to a Restoration Work Plan developed in accordance with the requirements of Paragraph 21 of the Consent Decree. In accordance with Paragraph 23 of the Consent Decree, Honeywell shall acquire, at a commercially reasonable price, fee title to approximately 8-10 acres of property contiguous to the Restoration Project area. Pursuant to the Trustees' written notification and the requirements of Paragraph 24, Honeywell shall (i) retain fee title to this approximately 8-10 acres of property, subject to a Conservation Easement granted to the State, (ii) convey fee title to the State or Onondaga County, or (iii) convey fee title to a third party designated by the Trustees, subject to a Conservation Easement granted to the State. Habitat conservation shall be achieved by Onondaga County in accordance with the requirements set forth in Paragraphs 35-36 of the Consent Decree.

Property Acquisition: In accordance with Paragraph 23 of the Consent Decree, Honeywell shall acquire, at a commercially reasonable price, fee title to approximately 8-10 acres of property contiguous to the Restoration Project area. Pursuant to the Trustees' written notification and the requirements of Paragraph 24 of the Consent Decree, Honeywell shall (i) retain fee title to this approximately 8-10 acres of property, subject to a Conservation Easement granted to the State, (ii) convey fee title to the State or Onondaga County, or (iii) convey fee title to a third party designated by the Trustees, subject to a Conservation Easement granted to the State. The acreage for these parcels is intended to be included in the acreage to be conserved.

Wetland Enhancements: Wetland enhancements shall be implemented in approximately 24 onshore acres, and shall consist of treating invasive species (e.g., *Phragmites*) with herbicide, preparing the soil, if needed, to expose soil for seeding, and seeding the areas where *Phragmites* treatment occurs with a native wetland seed mix (at a rate of 30 lb/acre) and a cover crop (at a rate of 30 lb/acre) selected for site specific conditions from seed mixes shown in Table 1. An approximately 3-acre emergent wetland at the northern end of Maple Bay shall be connected to the Lake by installation of an approximately 3-foot by 6-foot concrete box culvert or equivalent under the existing bike trail to permit the connection of the wetland to the lake during high water periods. Honeywell shall coordinate with designated representatives of the U.S. Fish and Wildlife Service with respect to the connection of the emergent wetland to the lake. This 3-acre emergent wetland shall also be enhanced by treating *Phragmites* with herbicide, preparing the soil, if needed, to expose soil for seeding, and seeding the areas where *Phragmites* control occurs with a native wetland seed mix (at a rate of 30 lb/acre) and a cover crop (at a rate of 30 lb/acre)

selected for site specific conditions from seed mixes shown in Table 1. The existing bike trail shall be restored after installation of the culvert. All treatments will be made in accordance with Onondaga County's policies regarding the use of herbicides (copy attached).

Vernal Pool Creation: Two vernal pools measuring approximately 2,500 square feet each shall be created in a location permitting a forested buffer measuring at least 500 feet around the vernal pools and having proper hydrologic conditions (as agreed to by the Trustees). Honeywell shall complete a water budget analysis for the selected vernal pool locations to determine the appropriate depth of excavation. A vernal pool native seed mix shall be developed from commercially available native seeds based on recommendations from State University of New York College of Environmental Science and Forestry (SUNY-ESF) and the U.S. Fish and Wildlife Service and sown in the vernal pools at a rate of 30 lb/acre (with a cover crop of 30 lb/acre). A separate seed mix (at a rate of 30 lb/acre) and a cover crop (at a rate of 30 lb/acre), selected for site specific conditions from seed mixes shown in Table 1, shall be sown on the spoils. Honeywell shall coordinate with designated representatives of the U.S. Fish and Wildlife Service with respect to the vernal pool creation. Spoils from the vernal pool creation are to be spread adjacent to the created pools.

Project Monitoring and Maintenance: Project monitoring and maintenance for the wetlands enhancement and vernal pools components of this Project shall be conducted by Honeywell for 5 consecutive years, with year one of maintenance and monitoring beginning immediately following the first growing season after project planting/seeding is completed. Project monitoring and maintenance requirements shall be conducted on an annual basis, except for the vernal pools which will be monitored twice per year. Project maintenance requirements shall include herbicide treatment to control *Phragmites*, water level monitoring in vernal pools, and reseeding and/or replanting as needed to achieve the Performance Criteria below. All treatments will be made in accordance with Onondaga County's policies regarding the use of herbicides (copy attached). Any necessary reseeding or replanting shall be conducted using native vernal pool or native wetland species that are performing well at the site or other native species as approved by the Trustees, using the application rates specified in this Scope of Work. If the Performance Criteria are not achieved after 5 years, Honeywell will coordinate with the Trustees to perform additional, agreed-upon restoration and monitoring work to achieve the Performance Criteria or utilize the Consent Decree's contingency provision at ¶ 30.

Performance Criteria:

Areas subject to *Phragmites* control and related work:

- *Phragmites* shall not exceed 20 percent by areal coverage.
- Areal coverage by native wetland species shall be at least 40 percent.
- There shall be at least 20 native wetland species represented.

Vernal Pools:

- The vernal pools shall be inundated in the late winter and early spring, and generally dry (minimal or no standing water) before the end of summer. Honeywell shall conduct twice yearly monitoring to determine compliance with these Performance Criteria.

- The vernal pools shall support no fewer than 1/3 of the plant species included in the seed mix, provided that shading conditions at the pool support this variety of seed mix species.
- Invasive species (e.g., *Phragmites*) and/or cattails (*Typha*) shall not exceed 20 percent by areal coverage.

3. NORTHWEST SHORELINE ONSHORE ENHANCEMENT PROJECT - Conservation of 90 Acres of Habitat; Enhancements to 16.5 Acres of Wetlands; Vernal Pool Creation

Project Location: The Northwest Shoreline Onshore Enhancement Project is to be conducted in the northwestern portion of Onondaga Lake, beginning at the south end of the Maple Bay project boundary and ending at Ninemile Creek. The project area includes approximately 47 acres of wetlands and approximately 43 acres of uplands. See Figure C.

Project Description: The Northwest Shoreline Onshore Enhancement Project shall include work to conserve approximately 90 acres of habitat, and to enhance onshore habitat through wetland enhancements, vernal pool creation, invasive species control, and native plant establishment. The wetland enhancement and vernal pool creation work shall be conducted by Honeywell pursuant to a Restoration Work Plan developed in accordance with the requirements of Paragraph 21 of the Consent Decree. Habitat conservation shall be achieved by Onondaga County in accordance with the requirements set forth in Paragraphs 35-36 of the Consent Decree.

Wetland Enhancements: Wetland enhancements shall be implemented in approximately 16.5 acres, and shall consist of treating invasive species (e.g., *Phragmites*) with herbicide, preparing the soil, if needed, to expose soil for seeding, and seeding the areas where *Phragmites* treatment occurs with a native wetland seed mix (at a rate of 30 lb/acre) and a cover crop (at a rate of 30 lb/acre) selected for site specific conditions from seed mixes shown in Table 1. All treatments will be made in accordance with Onondaga County's policies regarding the use of herbicides (copy attached).

Vernal Pool Creation: Four vernal pools measuring approximately 2,500 square feet each shall be created in a location with a forested buffer measuring an average of approximately 1.8 acres around each vernal pool, and having proper hydrologic conditions (as agreed to by the Trustees). Honeywell shall complete a water budget analysis for the selected vernal pool locations to determine the appropriate depth of excavation. Spoils from the vernal pool creation are to be spread adjacent to the created pools. A vernal pool native seed mix shall be developed from commercially available native seeds based on recommendations from SUNY-ESF and the U.S. Fish and Wildlife Service and sown in the vernal pools at a rate of 30 lb/acre (with a cover crop of 30 lb/acre). A separate seed mix (at a rate of 30 lb/acre) and a cover crop (at a rate of 30 lb/acre), selected for site specific conditions from seed mixes shown in Table 1, shall be sown on the spoils. Honeywell shall coordinate with designated representatives of the U.S. Fish and Wildlife Service with respect to the vernal pool creation.

Project Monitoring and Maintenance: Project monitoring and maintenance for the wetlands enhancement and vernal pools components of this Project shall be conducted by Honeywell for 5 consecutive years, with year one of maintenance and monitoring beginning immediately following the first growing season after project planting/seeding is completed. Project monitoring and maintenance shall be conducted thereafter on an annual basis, excepting the vernal pools which will be monitored twice per year. Project maintenance requirements shall include herbicide treatment to control *Phragmites*, water level monitoring in vernal pools, and reseedling and/or replanting as needed to achieve the Performance Criteria below. All treatments

will be made in accordance with Onondaga County's policies regarding the use of herbicides (copy attached). Any necessary reseeding and/or replanting shall be conducted using native vernal pool or native wetland species that are performing well at the site or other native species as approved by the Trustees, using the application rates specified in this scope. If the Performance Criteria are not achieved after 5 years, Honeywell will coordinate with the Trustees to perform additional, agreed upon restoration and monitoring work to achieve the Performance Criteria or utilize the Consent Decree's contingency provision at ¶ 30.

Performance Criteria:

Areas subject to *Phragmites* control and related activities:

- *Phragmites* shall not exceed 20 percent by areal coverage.
- Areal coverage by native wetland species shall be at least 40 percent.
- There shall be at least 20 native wetland species represented.

Vernal Pools:

- The vernal pools shall be inundated in the late winter and early spring, and generally dry (minimal or no standing water) before the end of summer and Honeywell shall conduct twice yearly monitoring to determine compliance with these Performance Criteria.
- The vernal pools shall support no fewer than 1/3 of the plant species included in the seed mix, provided that shading conditions at the pool support this variety of seed mix species.
- Invasive species (e.g., *Phragmites*) and/or cattails (*Typha*) shall not exceed 20 percent by areal coverage.

4. ADDITIONAL IN-LAKE HABITAT CREATION PROJECT - Installation of Additional In-Lake Habitat Structures (Cobble Piles and Boulders) to Lake Bottom

Project Location: The Additional In-Lake Habitat Creation Project shall be implemented in approximately 240 acres of Onondaga Lake. See Figure D.

Project Description: The Additional In-Lake Habitat Creation Project shall consist of work to install habitat structures in approximately 240 acres of Onondaga Lake. This includes installing additional structures within the Onondaga Lake Bottom Subsite remediation area and installing additional structures within an approximately 120-acre zone along the southeast shore of Onondaga Lake that is outside the remediation area. The habitat structure installation work shall be conducted by Honeywell pursuant to a Restoration Work Plan developed in accordance with the requirements of Paragraph 21 of the Consent Decree, utilizing existing lake bottom data.

Installation of Additional Structures: The Additional In-Lake Habitat Creation Project shall include the installation of 270 additional habitat structures in the remediation areas, beyond those identified in the April 2016 Draft Final Design Habitat Addendum for the Onondaga Lake Bottom Subsite capping remedy (which provides for 1,067 structures). The 270 additional offshore habitat structures shall be installed in the remediation areas; the types of structure to be installed shall be of the same type of structures approved for use in Onondaga Lake Bottom Subsite remedy, and quantities of each type of structure shall be proportional to the types of structure included in the Onondaga Lake Bottom Subsite remedy. A total of 141 cobble piles (sized at approximately 0.3 cubic yards each) shall be installed between water depths of approximately 7 and 20 feet. Specific material sizing shall be detailed in the Restoration Work Plan. A total of 129 boulders (measuring approximately 12 inches to 15 inches diameter) shall be installed between water depths of approximately 5 and 7 feet in locations to allow sufficient water over the tops of the structures for navigation, consistent with the Lake Bottom remediation design. The additional in-lake structures designated for Remediation Areas shall be distributed among the Remediation Areas designated in the Record of Decision as follows, provided such distribution is feasible and consistent with the remedial design.

Remediation Area	Number of Cobble Piles	Number of Boulders
A	35	28
D	43	43
E	63	58

In addition to the structures being added within remediation areas, approximately 120 additional acres within the South East Shoreline Habitat Enhancement Area will also be enhanced with habitat structures that include:

- Porcupine cribs that measure approximately 4 feet by 4 feet by 4 feet each (50 total).
- Log cribs that measure approximately 7 feet by 7 feet by 3 feet each (20 total).
- Cobble reefs that measure approximately 400 square feet each (16 total).
- Gravel reefs that measure approximately 400 square feet each (16 total).

- Anchored root wads that have a minimum root wad diameter of 4 feet and a 15 to 30-foot long bole (trunk) and that are approximately 1.5-ft. in diameter (5 total).

Details regarding locations of all components, including any required buoys, will be provided for the Trustees' review and approval. Navigational buoy installation will likely be required in areas where the tops of structures are within 4 feet of the water surface and structures are installed greater than 100 feet offshore. Honeywell shall coordinate with the New York State Office of Parks, Recreation and Historic Preservation concerning the placement of any required buoys.

Performance Criteria:

In-Lake Habitat Structures:

Within 8 months to 1 year following the completed installation of said structures, a sampling of 20 percent of the total of cobble/gravel reefs, porcupine cribs, log cribs, and root wads, including a sample of each type of structure (e.g., stratified by structure type) that are placed outside the remediation cap areas shall be conducted through visual monitoring to verify that the sampled structures remain visible a minimum of 1 foot above the lake bottom, except for cobble/gravel reefs that shall remain visible a minimum of ½ foot above the lake bottom, in a manner consistent with contributing to topographic diversity and habitat value. For those structures placed within the remediation areas, placement of 25 of the first 50 rock piles installed shall be verified through visual monitoring for consistency with the project design. If these Performance Criteria are satisfied, Honeywell may petition the Trustees to be released from further NRD-only monitoring and maintenance requirements for the in-lake habitat structures. If the Performance Criteria are not met, Honeywell shall coordinate with the Trustees to develop and implement a more expansive sampling protocol and to modify or relocate the structures to achieve the Performance Criteria or utilize the Consent Decree's contingency provision at ¶ 30.

5. WETLAND CONSERVATION PROJECT - Acquisition and Conservation of 200 Acres of Wetlands

Project Location: The Wetland Conservation Project shall be implemented in an area encompassing approximately 200 acres of wetlands in the vicinity of Onondaga Lake.

Project Description: Honeywell shall acquire 200 acres of wetlands in the Onondaga Lake area in accordance with Paragraph 23 of the Consent Decree. Pursuant to the Trustees' written notification and the requirements of Paragraph 24 of the Consent Decree, Honeywell shall (i) retain fee title to these 200 acres of property, subject to a Conservation Easement granted to the State, (ii) convey fee title to the State, or (iii) convey fee title to a third party designated by the Trustees, subject to a Conservation Easement granted to the State. If applicable, pursuant to Paragraph 24 of the Consent Decree, Conservation Easements² covering 200 acres of wetland and upland areas shall be developed to provide that the project areas shall remain conserved and undeveloped in perpetuity, and shall prohibit in perpetuity: (i) all residential, commercial, agricultural and industrial activities; (ii) all mechanized vehicles except for emergency, police or maintenance vehicles; (iii) all non-mechanized vehicles (e.g., bicycles, scooters, skis, roller blade, etc.) except as the Trustees may allow; (iii) the use or application directly of herbicides or pesticides except as allowed in writing by the Trustees; and (iv) all facilities or structures related to public recreation except those facilities that are authorized by the Trustees. Stewardship of any conservation easement shall be provided in accordance with Paragraphs 12 and 37 of the Consent Decree.

² The Conservation Easement will describe future land use and management restrictions, and appropriate land uses to protect the habitat in perpetuity for birds, fish, wildlife, and human use. The Conservation Easement shall be designed to protect wetlands, uplands, and stream habitat, protect fish and wildlife habitat and the ecological value of the land, provide open space protection, and to protect scenic and natural features.

6. NATIVE GRASSLANDS RESTORATION PROJECT - Creation of 100 Acres of Native Grasslands Bird Habitat

Project Location: The Native Grasslands Restoration Project shall be implemented on approximately 105 acres within Settling Basins 13 and 15 on Honeywell-owned property located in the Town of Camillus. See Figure E.

Project Description: The Native Grasslands Restoration Project shall consist of the creation of approximately 105 acres of native grassland bird habitat in Settling Basins 13 and 15, with approximately 55 of those acres to be located on the Sediment Consolidation Area (“SCA”) of Settling Basin 13 and approximately 50 of those acres to be located on the eastern portion of Settling Basin 15. Honeywell shall work with the Trustees and NYSDEC to ensure consistency of the project with the administrative consent orders for Settling Basins 12-15 if and as needed. The restoration work shall be conducted by Honeywell pursuant to a Restoration Work Plan developed in accordance with the requirements of Paragraph 21 of the Consent Decree.

SCA Native Grasslands Restoration: Approximately 55 acres of the SCA in Settling Basin 13 shall be restored as native grassland habitat. A native grassland seed mix and a cover crop selected for site specific conditions from the seed mix shown on Table 1, or as approved by the Trustees, shall be installed on the approximately 55 acres (at a rate of no less than 25 lbs/acre and 15 lbs/acre, respectively) as the final vegetated cover layer.

Settling Basin 15 Native Grasslands Restoration: Approximately 50 acres of the eastern portion of Settling Basin 15 shall be restored as native grassland habitat. For those 9 acres of Settling Basin 15 that are already covered, the existing cover shall be treated as necessary and reseeded as native grassland habitat. For the remaining 41 acres of Settling Basin 15, the native grassland seeding and cover shall be installed pursuant to the Restoration Work Plan for this Project and/or as part of the closure plan required by the applicable DEC administrative consent order. Invasive species control efforts shall include the application of herbicide in areas to be seeded that contain invasive species. A similar native grassland seed mix and cover crop selected for site specific conditions from the seed mix shown in Table 1, or as approved by the Trustees, shall be installed at a rate of no less than 25 lbs/acre and 15 lbs/acre, respectively.

Project Monitoring and Maintenance: Project monitoring and maintenance requirements for the SCA acreage shall be consistent with the post-closure care requirements for the SCA set forth in DEC’s administrative consent order. An herbaceous vegetative cover will be maintained by mowing on a regular schedule, except for the area within a 10-foot radius of the vents on the SCA that will not be mowed. Trimming of the area around the vents on the SCA will only be performed if the vegetation is interfering with vent operations. During the first growing season, it is anticipated that vegetation will be mowed in mid-May and mid-June to a height of 6 to 8 inches, and to a height of 10 to 15 inches in mid-August. This mowing regime will be designed to reduce competition for sunlight and moisture, prevent unwanted species from producing seed during the first growing season, and allow warm season grasses that are developing their root systems to establish. Prior to each scheduled mowing event during the first growing season, a site inspection will be performed to determine the extent and type of mowing that is needed. In the second and third growing seasons, vegetation will be mowed to a height of 10 to 15 inches

before April 15 and after September 15. If field conditions prior to April 15th do not allow for mowing to occur without potentially damaging the cover system, the vegetation will only be mowed after September 15th. Following the third growing season, mowing will occur on a 3-year rotating cycle, with one third of the vegetative cover area (including approximately 17 contiguous acres on the SCA) mowed once each year after October 1 to a height of 10 to 15 inches (i.e. each 1/3 area will be mowed once every three years). The goal is to mow large contiguous areas of grassland each year and not strips of disconnected grassland. The native grasslands to be installed on Settling Basin 15 will follow the same mowing approach as those for the SCA, but may vary somewhat for the first three years based on site specific conditions. Any deviation from the agreed-to mowing regime will be subject to the Trustees' approval prior to implementation. If the Performance Criteria below are not achieved after 5 years of monitoring and maintenance, Honeywell will coordinate with the Trustees to perform additional, agreed upon restoration and monitoring work to achieve the Performance Criteria, including additional mechanical or chemical control of invasive species and re-seeding and/or re-planting of native species or utilize the Consent Decree's contingency provision at ¶ 30. Honeywell shall maintain the 3-year mowing regime to benefit grassland nesting birds, as described above, for 30 years, commencing upon the date of Project Completion.

Performance Criteria:

- Native grasslands shall have a minimum areal coverage of 30 percent native grassland species.
- There shall be at least 15 native species represented.
- Invasive species (e.g., *Phragmites*, *purple loosestrife*) and/or reed canary grass (*Phalaris arundinacea*) shall not exceed 10 percent by areal coverage.

7. NINEMILE CREEK CORRIDOR ECOLOGICAL ENHANCEMENT PROJECT - Conservation of 100 Acres of Habitat; Enhancements to 4 Acres of Floodplain Forest, 5 Acres of Wetlands

Project Location: The Ninemile Creek Corridor Ecological Enhancement Project shall be implemented on approximately 100 acres of property along Ninemile Creek between Airport Road and the New York State Fairgrounds. The Ninemile Creek Corridor includes an approximately 1.1-mile reach of Ninemile Creek, an approximately 0.4-mile stretch of Geddes Brook, as well as varied upland, floodplain, riparian, and wetland habitat. The property is owned by Honeywell. See Figure F.

Project Description: The Ninemile Creek Corridor Ecological Enhancement Project shall include enhancements to a forested and wetland corridor abutting Ninemile Creek, including approximately 4 acres of floodplain forest, and approximately 5 acres of wetlands (adjacent to the Geddes Brook wetlands). The Ninemile Creek Corridor Ecological Enhancement Project shall be conducted by Honeywell pursuant to a Restoration Work Plan developed in accordance with the requirements of Paragraph 21 of the Consent Decree. Pursuant to the Trustees' written notification and the requirements of Paragraph 24 of the Consent Decree, Honeywell shall (i) retain fee title to these 100 acres of property along Ninemile Creek between Airport Road and the New York State Fairgrounds, subject to a Conservation Easement granted to the State, (ii) convey fee title to the State, or (iii) convey fee title to a third party designated by the Trustees, subject to a Conservation Easement granted to the State. Honeywell shall work with the NYSDEC to ensure consistency of the project enhancement work with the administrative consent order for Settling Basins 12-15 to the extent the area in which the project's habitat enhancement work is performed is governed by the Surrounding Affected Area provisions of that administrative consent order.

Habitat Conservation: Habitat conservation shall be achieved by means of a Conservation Easement and/or conveyance of fee title as provided in Paragraph 24 of the Consent Decree. If applicable, a Conservation Easement³ to conserve wetlands, forested floodplain, and upland acres shall be developed for this Project in conjunction with Project #8, Hudson Farms Ecological Enhancement Project. If subject to a Conservation Easement, pursuant to Paragraph 24 of the Consent Decree, the areas of the Project shall remain conserved and undeveloped in perpetuity, and shall prohibit in perpetuity: (i) all residential, commercial, agricultural and industrial activities; (ii) all mechanized vehicles except for emergency, police, maintenance or remediation project vehicles; (iii) all non-mechanized vehicles (e.g., bicycles, scooters, skis, roller blade, etc.) except as the Trustees may allow; (iii) the use or application directly of herbicides or pesticides except as allowed in writing by the Trustees or as required by pre-existing agreements with DEC related to previous site restoration; and (iv) all facilities or structures related to public recreation except those facilities that are authorized by the Trustees.

³ The Conservation Easement will describe future land use and management restrictions, and appropriate land uses to protect the habitat in perpetuity for birds, fish, wildlife, and human use. The Conservation Easement shall be designed to protect wetlands, uplands, and stream habitat, protect fish and wildlife habitat and the ecological value of the land, provide open space protection, and to protect scenic and natural features.

Stewardship of any conservation easement shall be provided in accordance with Paragraphs 12 and 37 of the Consent Decree.

Floodplain Forest Enhancement: Floodplain forest enhancement measures shall be implemented in approximately 4 acres and shall consist of invasive species control measures, native plant establishment, and installation of temporary deer fencing. Work shall consist of treating patches of herbaceous invasive species (e.g., *Phragmites*, Japanese knotweed) with herbicide, physical removal of woody invasive species (e.g., buckthorn, Russian Olive), soil preparation where invasive species control occurs, if needed, to expose soil, and seeding areas where invasive species controls occur with a native floodplain seed mix (at a rate of 10 lb/acre) and a cover crop (at a rate of 20 lb/acre) selected for site specific conditions from seed mixes shown in Table 1. A minimum of 4,000 linear feet of 8-foot-tall (minimum) deer fencing shall be installed in selected enhanced areas to protect naturally occurring seedlings from deer browse. Work shall be performed to coincide with eastern cottonwood seed drop to facilitate natural regeneration of this floodplain species. Fencing shall be removed by Honeywell if requested by the Trustees.

Wetland Enhancements: Wetland enhancements shall be implemented in approximately 5 acres of wetlands located adjacent to the previously restored Geddes Brook wetlands, and shall consist of treating invasive species (e.g., *Phragmites*) with herbicide, preparing the soil, if needed, to expose soil for seeding, and seeding areas where *Phragmites* control occurs with a native wetland seed mix (at a rate of 30 lb/acre) and a cover crop (at a rate of 20 lb/acre) selected for site specific conditions from seed mixes shown in Table 1.

Project Monitoring and Maintenance: Project monitoring and maintenance for the wetlands enhancement and floodplains forest enhancement components of this Project shall be conducted for 5 consecutive years, with year one of maintenance and monitoring beginning immediately following the first growing season after project planting/seeding is completed. Project monitoring and maintenance shall be conducted thereafter on an annual basis. Project maintenance requirements shall include herbicide treatment to control invasive species (e.g., *Phragmites*, Japanese knotweed, buckthorn, Russian olive) and reseedling and/or replanting as needed to achieve the Performance Criteria below. Any necessary reseedling or replanting shall be conducted using native wetland/upland species that are performing well at the site or other native species as approved by the Trustees, using the application rates specified in this scope. If the Performance Criteria are not achieved after 5 years, Honeywell will coordinate with the Trustees to perform additional, agreed-upon restoration and monitoring work to achieve the Performance Criteria, or utilize the Consent Decree's contingency provision at ¶ 30.

Performance Criteria:

Areas subject to *Phragmites* control and related activities:

- *Phragmites* shall not exceed 20 percent by areal coverage.
- Areal coverage by native wetland species shall be at least 40 percent.
- There shall be at least 20 native wetland species represented.

Areas subject to Floodplain Forest Restoration:

- Woody invasive species (e.g., buckthorn, Russian olive) shall not exceed 20 percent by areal coverage.
- Evidence of regeneration of forest species shall be demonstrated by, generally on average, at least 1 un-browsed seedling per square meter.
- There shall be at least 10 native upland forest species represented in regenerating seedlings.

8. HUDSON FARMS ECOLOGICAL ENHANCEMENT PROJECT - Conservation of 117 Acres of Habitat; Enhancements to 32 Forested Acres, 24 Wetland Acres; Creation of Vernal Pools

Project Location: The Hudson Farms Ecological Enhancement Project shall be implemented on approximately 117 acres of Honeywell-owned property located northwest and west of the Settling Basins 12-15 site in Camillus, NY. The Hudson Farms property includes an approximately 1.1-mile reach of Ninemile Creek, as well as varied upland and wetland habitat. One small privately-held parcel located in the vicinity shall be acquired by Honeywell and added to the Project Area. See Figure G.

Project Description: The Hudson Farms Ecological Enhancement Project shall include enhancements to approximately 32 acres of forest habitat, creation of vernal pools, enhancements to approximately 24 acres of wetland habitat, and habitat conservation measures. The enhancement work shall be conducted by Honeywell pursuant to a Restoration Work Plan developed in accordance with the requirements of Paragraph 21 of the Consent Decree. In accordance with Paragraph 23 of the Consent Decree, Honeywell shall acquire, at a commercially reasonable price, fee title to one approximately 2 acre centrally located, privately held parcel. Pursuant to the Trustees' written notification and the requirements of Paragraph 24 of the Consent Decree, Honeywell shall (i) retain fee title to the Project Area, subject to a Conservation Easement granted to the State, (ii) convey fee title to the State, or (iii) convey fee title to a third party designated by the Trustees, subject to a Conservation Easement granted to the State. Honeywell shall work with the NYSDEC to ensure consistency of the project with the administrative consent order for Settling Basins 12-15 to the extent it is governed by the Surrounding Affected Area provisions of that consent order.

Habitat Conservation: Habitat conservation shall be achieved by means of a Conservation Easement and/or conveyance of fee title as provided in Paragraph 24 of the Consent Decree. If applicable, a Conservation Easement⁴ to protect wetland and upland acres for this Project shall be developed in conjunction with the Ninemile Creek Corridor Ecological Enhancement Project. Pursuant to Paragraph 24 of the Consent Decree, any Conservation Easement, subject to the Trustees' approval, shall be prepared for approximately 62 acres of wetland habitat, approximately 55 acres of uplands, and approximately 1.8 miles of stream, and shall prohibit in perpetuity: (i) all residential, commercial, agricultural and industrial activities; (ii) all mechanized vehicles except for emergency, police, maintenance or remediation project vehicles; (iii) all non-mechanized vehicles (e.g., bicycles, scooters, skis, roller blade, etc.) except as the Trustees may allow; (iii) the use or application directly of herbicides or pesticides except as allowed in writing by the Trustees; and (iv) all facilities or structures related to public recreation

⁴ The Conservation Easement will describe future land use and management restrictions, and appropriate land uses to protect the habitat in perpetuity for birds, fish, wildlife, and human use. The Conservation Easement shall be designed to protect wetlands, uplands, and stream habitat, protect fish and wildlife habitat and the ecological value of the land, provide open space protection, and to protect scenic and natural features.

except those facilities that are authorized by the Trustees. Stewardship of the conservation easement shall be provided in accordance with Paragraphs 12 and 37 of the Consent Decree.

Forest Enhancement: Forest habitat enhancement measures shall be implemented in approximately 32 acres and shall consist of invasive species control measures, native plantings, and installation of temporary deer fencing. Work shall consist of treating patches of invasive herbaceous species (e.g., Japanese knotweed) with herbicide. Areas with a high proportion of invasive woody understory, approximately 25 acres total within the approximately 32-acre forest enhancement zone, shall be cleared and grubbed. Downed trees and shrubs that result from clearing shall be left on-site to act as cover for wildlife. An existing stand of non-native Norway spruce shall be cut, with the cut trees left in place to provide large woody structures as a habitat enhancement. Areas where invasive species control occurs and/or cleared areas shall have the soil prepared in the fall season, if needed, to allow for natural regeneration of upland forest species. Areas in which invasive species control occurs shall be seeded with a native upland conservation seed mix (at a minimum rate of 10 lb/acre) and a cover crop (at a minimum rate of 10 lb/acre) selected for site specific conditions from seed mixes shown in Table 1. A minimum of 7,000 linear feet of 8-foot-tall (minimum) deer fencing shall be installed in selected enhanced areas to protect naturally occurring seedlings from deer browse. Fencing shall be removed by Honeywell if requested by the Trustees.

Vernal Pool Creation: Two vernal pools measuring approximately 2,500 square feet each shall be created in an approximately 1-acre area, in a location permitting a forested buffer measuring at least 500 feet around the vernal pool(s) and having proper hydrologic conditions (as agreed to by the Trustees). Honeywell shall complete a water budget analysis for the selected vernal pool locations to determine the appropriate depth of excavation. A vernal pool native seed mix shall be developed from commercially available native seeds based on recommendations from SUNY-ESF and the U.S. Fish and Wildlife Service and sown in the vernal pools at a rate of 30 lb/acre (with a cover crop of 30 lb/acre). A separate seed mix (at a rate of 30 lb/acre) and a cover crop (at a rate of 30 lb/acre), selected for site specific conditions from seed mixes shown in Table 1, shall be sown on the spoils. Honeywell shall coordinate with designated representatives of the U.S. Fish and Wildlife Service with respect to vernal pool creation work. Spoils from the vernal pool creation are to be spread adjacent to the created pools.

Wetland Enhancements: Wetland enhancements shall be implemented in approximately 24 acres, and shall consist of treating invasive species (e.g., *Phragmites*) with herbicide, tilling, or grubbing the *Phragmites* thatch if needed to expose soil for seeding, and seeding the areas where *Phragmites* treatment occurs with a native wetland seed mix (at a rate of 30 lb/acre) and a cover crop (at a rate of 30 lb/acre) selected for site specific conditions from seed mixes shown in Table 1.

Property Acquisition: In accordance with Paragraph 23 of the Consent Decree, Honeywell shall acquire, at a commercially reasonable price, fee title to one approximately 2 acre centrally located, privately held parcel near the Restoration Project Area.

Project Monitoring and Maintenance: Project monitoring and maintenance for the forest enhancement, wetlands enhancement, and vernal pool components of this Project shall be

conducted for 5 consecutive years, with year one of maintenance and monitoring beginning immediately following the first growing season after project planting/seeding is completed. Project monitoring and maintenance shall be conducted thereafter on an annual basis, excepting the vernal pools which will be monitored twice per year. Project maintenance requirements shall include herbicide treatment to control *Phragmites*, water level monitoring and maintenance in vernal pools, and reseeding and/or replanting as needed to achieve the Performance Criteria below. Any necessary reseeding or replanting shall be conducted using native vernal pool or native wetland/upland species that are performing well at the site or other native species as approved by the Trustees, using the application rates specified in this scope. If the Performance Criteria are not achieved after 5 years, Honeywell will coordinate with the Trustees to perform additional, agreed-upon restoration and monitoring work to achieve the Performance Criteria, or utilize the Consent Decree's contingency provision at ¶ 30.

Performance Criteria:

Areas subject to *Phragmites* control and related activities:

- *Phragmites* shall not exceed 20 percent by areal coverage.
- Areal coverage by native wetland species shall be at least 40 percent.
- There shall be at least 20 native wetland species represented.

Vernal Pool Creation:

- The vernal pools shall be inundated in the late winter and early spring, and generally dry (minimal or no standing water) before the end of summer and Honeywell shall conduct twice yearly monitoring to determine compliance with these Performance Criteria.
- The vernal pools shall support no fewer than 1/3 of the plant species included in the seed mix, provided that shading conditions at the pool support this variety of seed mix species.
- Invasive species and/or cattails shall not exceed 20 percent by areal coverage.

Floodplain Forest Restoration:

- Woody invasives (e.g., buckthorn, Russian olive) shall not exceed 20 percent by areal coverage.
- Evidence of regeneration of forest species shall be demonstrated by generally, on average, at least 1 un-browsed seedling per square meter.
- There shall be at least 10 native upland forest species represented in regenerating seedlings.

9. INVASIVE SPECIES CONTROL AND HABITAT PRESERVATION PROJECT - 15-Year Program Funding to Implement Invasive Species Control Efforts in Onondaga Lake Watershed

Project Location: The Invasive Species Control and Habitat Preservation Project shall be implemented within Onondaga Lake and its watershed. The proposed project area includes approximately 1,700 acres of wetlands, lake/river littoral zone, and riparian zone habitat.

Project Description: Honeywell shall pay a maximum of up to \$200,000.00 annually for a period of 15 years for implementation of invasive species control efforts. The Invasive Species Control and Habitat Preservation Project shall be administered by an entity with technical expertise that is designated by the Trustees (“Project Administrator”); the Project shall be administered with oversight and approval from the Trustees. For informational purposes, the Trustees shall notify Honeywell of the designation of the Project Administrator, and shall update Honeywell if such designation changes during the Project period. All payments for this Project shall be made in accordance with the following process: within 18 months of the Effective Date of the Consent Decree, the Trustees shall provide Honeywell with the invasive species funding request for that calendar year, up to a maximum of \$200,000.00, with such payment to be made in accordance with Paragraph 13 of the Consent Decree. Funding requests for subsequent calendar years, not to exceed 14, are to be made on or before December 7 of each year. Any funds paid by Honeywell pursuant to this Paragraph shall be used by the Trustees for Invasive Species Control and Habitat Preservation in the year paid or in a subsequent year, provided, however, that the existence of unused funds paid pursuant to this Paragraph shall not affect the ability of the Trustees to request up to \$200,000.00 in any particular year. The Trustees shall oversee and approve all invasive species control projects to be administered by the Project Administrator, and the disbursement of all funds paid through this project for invasive species control efforts. For each annual payment of up to \$200,000.00, the Trustees shall secure and maintain documentation of projects implemented and costs incurred in accordance with the requirements of 43 C.F.R. Part 11.

The County may propose to the Trustees suggested locations in need of invasive species control efforts, which recommendation may be accepted or declined, in whole or in part, by the Trustees in their sole discretion. If a County-suggested control effort is to be performed on County-owned lands, the County shall grant access to the Trustees for the purpose of implementing any such control effort. Any proposed implementation of a control project on County-owned lands not at the request of the County shall be subject to the approval and consent of the County. Subject to any and all applicable legal obligations, the County will not unreasonably withhold consent and/or access for any such control effort. All control effort treatments on County-owned lands will be made in accordance with Onondaga County’s policies regarding the use of herbicides (copy attached). This County Project Implementation Access provision does not trigger any requirement by the County to file a Conservation Easement.

10. TULLY RECREATIONAL AREA AND NATURE PRESERVE PROJECT - Creation of Approximately 1,023-Acres of Recreational Area and Nature Preserve; Install Streambank Enhancements; Grant of Public Fishing Rights, Hunting Rights; Creation of Six New Angler Parking Areas

Project Location: The Tully Recreational Area and Nature Preserve Project shall be implemented on lands owned by Honeywell in Tully, Onondaga County, in the Onondaga Creek Watershed. See Figures H, H2, and H3.

Project Description: The Tully Recreational Area and Nature Preserve Project shall consist of an approximately 755-acre South Forest mixed-use nature preserve and an approximately 268-acre North Forest mixed-use nature preserve in the Onondaga Lake headwaters, providing a variety of recreational opportunities, implementation of ecological enhancements to improve streambanks, and conservation of wetlands and forested areas. This project shall be conducted by Honeywell pursuant to a Restoration Work Plan developed in accordance with the requirements of Paragraph 21 of the Consent Decree. Pursuant to the Trustees' written notification and the requirements of Paragraph 24 of the Consent Decree, Honeywell shall (i) retain fee title to the 1,023 acres of property in the North and South Forests in Tully, subject to a Conservation Easement granted to the State, (ii) convey fee title to the State, or (iii) convey fee title to a third party designated by the Trustees, subject to a Conservation Easement granted to the State.

Recreational Area Development: The Tully Recreational Area and Nature Preserve shall consist of two forest preserves totaling approximately 1,023 acres, including approximately 979 acres of forest and successional fields and approximately 45 acres of wetlands and floodplains. Above grade portions of existing plugged wells (with the exception of those that function as survey monuments) in the South Forest Preserve will be cut to grade and removed, subject to NYSDEC oversight.

Habitat Conservation: Habitat conservation shall be achieved by means of a Conservation Easement and/or conveyance of fee title as provided in Paragraph 24 of the Consent Decree. If applicable, pursuant to Paragraph 24 of the Consent Decree, a Conservation Easement⁵, subject to the Trustees' approval, shall be prepared for approximately 45 acres of wetland habitat and approximately 979 acres of forest lands. Stewardship of the conservation easement shall be provided in accordance with Paragraphs 12 and 37 of the Consent Decree.

Streambank Enhancements: Two thousand live stakes, bare root, or potted plant stock of native species selected for site specific conditions from plantings shown on Table 2 shall be installed in the denuded riparian areas adjacent to the proposed South Parking Area. At least

⁵ The Conservation Easement will describe future land use and management restrictions and appropriate land uses to protect the habitat in perpetuity for birds, fish, wildlife, and human use. The Conservation Easement shall be designed to protect wetlands, uplands, and stream habitat, protect fish and wildlife habitat and the ecological value of the land, provide open space protection, protect scenic and natural features, and to allow compatible outdoor recreational and educational uses.

10 percent of the plantings shall be commercially available trees such as American sycamore and red maple, which are protected by 5-foot tree tubes.

Fishing Access: Public fishing shall be allowed along all streams and tributaries on the property, subject to the approval of NYSDEC regional fisheries staff, measured at approximately 11 miles of streambank along Onondaga Creek headwaters and tributaries (approximately 1 mile of streambank in the North Forest Preserve and approximately 10 miles of streambank in the South Forest Preserve). Six new parking lots shall be constructed in areas providing access to streams and trails.

Parking: Five new gravel parking areas shall be installed in the South Forest Preserve to provide access to streams and hiking opportunities, including a path to Fellows Falls. South Parking Area 1 shall be sized to be approximately 5,200 square feet and approximately 12 parking spaces, and shall be sited adjacent to Route 11a at approximately 1.5 miles north of Solvay Road where an existing dirt turnaround is located (near coordinates 42.8392, -76.1351013). South Parking Area 2 shall be sized to be approximately 4,200 square feet and approximately 10 parking spaces, and shall be sited adjacent to Route 11a at approximately 0.4 mile north of Solvay Road (near coordinates 42.8192, -76.1344896). South Parking Area 3 shall be sized to be approximately 1,300 square feet and approximately 3 parking spaces, and shall be sited approximately across from the existing parking area on Tully Farms Road (near coordinates 42.8249, -76.1432037). South Parking Area 4 shall be sized to be approximately 1,700 square feet and approximately 3 parking spaces, and shall be sited near Fellows Falls off Woodmancy Road, approximately 800 feet north of the intersection of Woodmancy Road and Hidden Falls Road (near coordinates 42.8167, -76.1617966). South Parking Area 5 shall be sized to be approximately 6,500 square feet and approximately 15 parking spaces, and shall be sited approximately 0.6 mile north of the existing parking area on Tully Farms Road (near coordinates 42.8333, -76.143898).

A new gravel parking area shall be installed in the North Forest Preserve to provide access to streams and hiking opportunities. North Parking Area 1 shall be sized at approximately 3,500 square feet and approximately 5 parking spaces, and shall be sited on the south side of Nichols Road approximately 300 feet west of the intersection of Nichols Road and Route 11a (near coordinates 42.8723, -76.1386032).

Project Monitoring and Maintenance: Project monitoring and maintenance for the streambank enhancement component of this Project shall be conducted for 5 consecutive years, with year one of maintenance and monitoring beginning immediately following the first growing season after project planting/seeding is completed. Project monitoring and maintenance shall be conducted thereafter on an annual basis. Honeywell shall conduct annual monitoring of live stake, bare root, and/or potted plant plantings, and shall assess overall survivorship of plantings and whether and when to implement new live stake, bare root stock, or potted plantings during the project maintenance period to ensure that the Streambank Enhancement Performance Criteria below are met. If the Performance Criteria are not achieved after 5 years, Honeywell will coordinate with the Trustees to perform additional, agreed-upon restoration and monitoring work to achieve the Performance Criteria, including re-seeding and/or re-planting of native species, or utilize the Consent Decree's contingency provision at ¶ 30.

Performance Criteria:

Streambank Enhancement:

- At least 80 percent shrub and tree survival is achieved, or at least 80 percent cover of desirable vegetation is achieved.

11. ERIE CANAL TRAIL PROJECT --

Creation of 3.2-Mile Extension of Erie Canal Trailway to Connect with Onondaga County West Lake Recreation Trail; Provision of Additional Parking for Trail Users

Project Location: The Erie Canal Trail Project is to be located between the existing trailhead of the Erie Canalway Trail (Camillus to Port Byron section) at the Warners Road intersection near Reed Webster Park in Camillus, and the existing Onondaga County West Lake Recreation Trail parking area. The route for the Erie Canalway Trail extension largely traverses property owned by Honeywell, Onondaga County, and the State of New York. See Figure I.

Project Description: The Erie Canal Trail Project shall consist of work to extend the current Erie Canalway Trail (Camillus to Port Byron section) by approximately 3.2 miles, including approximately 2.3 miles on Honeywell property, to terminate at the current Onondaga County West Lake Recreation Trail parking area. Project work shall include trail extension and improvements, the addition of bike lanes in certain segments, and construction of an additional parking area. In accordance with Paragraph 23 of the Consent Decree, Honeywell shall acquire, at a commercially reasonable price, fee title to one property parcel or a right of way across said property if available to enhance the trail route; if access to the property parcel is not reasonably possible, the trail route shall be adjusted accordingly. This project shall be conducted by Honeywell pursuant to a Restoration Work Plan developed in accordance with the requirements of Paragraph 21 of the Consent Decree.

Description of the Trail: The trail extension shall be approximately 3.2 miles of total trail length, subject to verification of final route. The trail shall be a minimum of 6 feet and a maximum of 12 feet wide. For those portions that are not located on roadways, the trail shall be top dressed with cinder or crushed stone where possible, and shall generally be composed of an aggregate base layer, where needed, with a cinder or crushed stone surface, totaling 6 inches in depth. Erosion control measures and culverts shall be incorporated into the trail design and construction. For those sections of the preferred trail pathway that are on, or cross, public roadways, bicycle lanes shall be painted on the street surface. The Erie Canal Trail extension shall be designed to connect with the 0.8-mile segment of Bridge Street that is included in the Onondaga County planned upgrades in connection with the Bridge Street Promenade Project. The project work shall include development of approximately 3 miles of new trail length, installation of improvements (e.g., lane markings, guarding) to approximately 0.25 mile of currently existing pedestrian bridges over Interstate 690, and installation of approximately 200 feet of new painted and/or signed trail between the end of the pedestrian bridges and the current Onondaga County West Lake Trail parking area, provided state and County approvals can reasonably be obtained. The trail head shall be located at the current end of the Erie Canalway Trail (Camillus to Port Byron section) intersection with Warners Road (Camillus) at Reed Webster Park. A portion of the main trail shall be constructed on the Gere Lock tow path, provided Honeywell is reasonably able to obtain any required approval from the New York State Historic Preservation Office and provided that an existing aqueduct over Geddes Brook is deemed structurally sound to support the proposed trail development. Pending agreement with the New York State Department of Transportation and the New York State Fair, additional guarding shall be added to heighten the existing railings on approximately 0.25 mile of State Fair pedestrian bridges that connect the State Fair main gate to the Orange parking lot. An

approximately 8-foot-wide by 200-foot-long section shall be paved on top of the State Fair Orange parking lot to connect the State Fair pedestrian bridge over Interstate 690 to the current Onondaga County West Lake Trail parking area, provided required State or County approvals can reasonably be obtained. The terminus of the trail expansion shall be the current Onondaga County West Lake Trail parking area.

Parking Area Development: Existing public parking with space for approximately 10 cars is available at the trailhead, which is currently located on property owned by Honeywell and located on the east side of Warners Road immediately across from the terminus of the existing Erie Canal Trail. An additional approximately 4,200-square-foot gravel parking area shall be built to provide additional trail access, and shall be sited either near the Bridge Street end of the trail or at another location to be proposed by Honeywell in the Restoration Work Plan that is subject to the Trustees' approval.

Potential Land Transfer: Within 18 months of the Effective Date, Honeywell will offer to transfer a portion of its Gere Lock property to the Town of Camillus or another interested non-governmental entity, subject to the Trustees' approval, for use as a historical site, subject to reasonable conditions. Honeywell shall conduct a due diligence inquiry as set forth in ASTM E1527-13 (Standard Practice for Environmental Site Assessments) for such parcel and shall provide the results of such due diligence inquiry to the Trustees, the Town of Camillus, or a non-governmental entity as approved by the Trustees within 60 days of completion of the inquiry.

Project Maintenance: In accordance with Paragraph 34(a) of the Consent Decree, upon approval by the Trustees of Honeywell's Restoration Project Implementation Report for this Project, the County shall maintain for 25 years that portion of the Erie Canal Trail Project located in the County West Lake Trail parking area, located in the New York State Fairgrounds Orange Parking Lot, in a manner consistent with the Project's purpose. Project maintenance for the remainder of the trail shall be provided by Honeywell, and shall consist of routine maintenance to keep the trail accessible, including debris removal, weed control, tree pruning, sign maintenance, erosion control, re-painting of road crossings and bicycle lanes, and minor repair for a minimum of 5 years.

12. SOUTHWEST SHORE RECREATION TRAIL PROJECT-

Extension of Recreation Trail Segment From Visitor Center to Harbor Brook

Project Location: The Southwest Shore Recreation Trail Project shall be implemented along the southwestern shoreline of Onondaga Lake. The shoreline property is owned by Honeywell. See Figure J.

Project Description: The Southwest Shore Recreation Trail Project shall consist of work to extend the West Shore Recreation Trail from near the Onondaga Lake Visitor Center to the Harbor Brook area. This project shall be conducted by Honeywell pursuant to a Restoration Work Plan developed in accordance with the requirements of Paragraph 21 of the Consent Decree.

Trail Extension: The trailhead for the Southwest Shore Recreation Trail Project shall be located at the start of Honeywell-owned property immediately east of the Onondaga County Pumphouse (near coordinates 43.071561, -76.204431). The recreation trail extension shall continue southeast along the southwestern shoreline of Onondaga Lake for approximately 1.2 miles, and the extension shall end where the Harbor Brook culvert is located (near coordinates 43.061818, -76.187759). Depending on localized conditions, the trail extension shall be between a minimum of 8 feet wide and a maximum of 12 feet wide, and constructed in a manner consistent with existing Onondaga County park paths and compliant with ADA guidance. Three-rail safety fencing or similar fencing shall be installed along the portions of the trail that have a steep bank near the water's edge. Bench seating shall be installed at 5 locations along the length of the trail extension. The Restoration Work Plan for this Project shall reflect consistency with groundwater monitoring and other future remedial requirements for this area, and shall be subject to the Trustees' and NYSDEC Division of Remediation approval. Honeywell shall permit public access to its property for use of the trail and for access to the Lake shoreline via the grant of a non-exclusive permanent easement to the County for public use of the trail and maintenance and repair of the trail by Onondaga County, which easement shall also include a grant of enforcement authority to the State of New York.

Project Maintenance: In accordance with Paragraph 34(a) of the Consent Decree, upon approval by the Trustees of Honeywell's Restoration Project Implementation Report for this Project, trail maintenance shall be provided by the County for 25 years in a manner consistent with the Project's purpose.

13. DEEP WATER FISHING PIER PROJECT - Purchase and Installation of Floating Fishing Pier, Gangway and Path Construction connecting to Southwest Shore Recreation Trail

Project Location: The Deep Water Fishing Pier Project shall be implemented at a location along the southwest shore of Onondaga Lake that enables angler access to deeper waters in Onondaga Lake and where the underlying cap installed during remediation is sufficient to support the anchoring system. The specific location and design shall be proposed by Honeywell and subject to the review and consent of Onondaga County and the approval of the Trustees and the NYSDEC Division of Remediation. The shoreline property is owned by Honeywell. The Lake Bottom is owned by the State of New York. See Figure K.

Project Description: This Project shall be implemented by Honeywell pursuant to a Restoration Work Plan developed in accordance with the requirements of Paragraph 21 of the Consent Decree. The Deep Water Fishing Pier Project shall consist of the purchase and installation of a 16-foot by 100-foot railed steel truss floating fishing pier to provide deep water access to anglers. A 4-foot by 40-foot railed gangway shall be installed to provide access to the fishing pier from the shore. A path connecting the pier to the Southwest Shore Recreation Trail shall be constructed in a manner consistent with existing Onondaga County park paths and compliant with ADA guidance.

Project Maintenance: In accordance with Paragraph 34(a) of the Consent Decree, upon approval by the Trustees of Honeywell's Restoration Project Implementation Report for this Project, project maintenance shall be provided by the County for 25 years in a manner consistent with the Project's purpose, to include repairs to erosion of the trails but not the shoreline. Project maintenance shall consist of annual installation and removal of the pier in the early spring and the late fall, respectively, the timing of which shall maximize to the extent feasible usable days for the public.

14. SOUTHWEST SHORE ANGLER ACCESS PROJECT- Provision of Public Fishing Access and a Parking Lot

Project Location: The Southwest Shore Angler Access Project shall be implemented along the southwest shore of Onondaga Lake, between the Onondaga Lake Visitor Center and Harbor Brook. The property is owned by Honeywell. See Figure J.

Project Description: The Southwest Shore Angler Access Project shall be implemented by Honeywell pursuant to a Restoration Work Plan developed in accordance with the requirements of Paragraph 21 of the Consent Decree. The Southwest Shore Angler Access Project shall consist of providing approximately 1.4 miles of public fishing access along Honeywell property located east of the Onondaga Lake Visitor Center to the end of the east barrier wall for as long as Onondaga County maintains the Southwest Shore Recreation Trail for public use. The public fishing access will be directly accessible from the adjacent Southwest Shore Recreation Trail. Approximately 1,300 linear feet of public fishing access shall provide access to deep water; approximately 1,350 linear feet of public fishing access shall provide access to moderate water depths; and approximately 4,700 linear feet of the public fishing access shall provide access to shallow water depths. A new gravel parking lot measuring approximately 10,000 square feet shall be constructed at a location along the current construction road, subject to the approval of the Trustees and the NYSDEC Division of Remediation.

Project Maintenance: In accordance with Paragraph 34(a) of the Consent Decree, upon approval by the Trustees of Honeywell's Restoration Project Implementation Report for this Project, project maintenance shall be provided by the County for 25 years in a manner consistent with the Project's purpose, excluding the gravel parking lot and erosion or natural changes to the shoreline. Project maintenance shall consist of routine maintenance to keep the shoreline accessible such as mowing, debris removal, and tree pruning.

15. VISITOR CENTER TRANSFER AND BOAT LAUNCH AMENITIES PROJECT - Construction of Boat Launch Amenities; Transfer of the Visitor Center

Project Location: The Visitor Center Transfer and Boat Launch Amenities Project shall be implemented at the Onondaga Lake Visitor Center located on the western shore of Onondaga Lake. See Figure J.

Project Description: Honeywell shall maintain the Onondaga Lake Visitor Center for five years from the Effective Date of the Consent Decree for use in support of recreational purposes consistent with its past practices allowing groups to reserve and meet in the Visitors Center. Within three years from the Effective Date of the Consent Decree, Honeywell shall install a potable water connection from the County's West Side Pump Station to the Visitor Center, and shall construct a picnic area in the lawn area north and east of the Visitor Center. Within one year of when the potable water connection is operational at the pump station, a cold water rinse station to assist in invasive species control efforts shall be installed at the planned boat launch to be located southeast of the Visitor Center. At the end of Honeywell's five year maintenance period and subject to the Trustees' request, Honeywell may transfer the Visitor Center to New York State or a non-governmental entity. The Visitor Center Transfer and Boat Launch Amenities Project shall be conducted by Honeywell pursuant to a Restoration Work Plan developed in accordance with the requirements of Paragraph 21 of the Consent Decree.

16. NINEMILE CREEK AND HUDSON FARMS FISHING ACCESS PROJECT - Provision of Public Fishing Rights Along 6.8 Miles of Streambanks; Provision of Three Parking Facilities

Project Location: The Ninemile Creek and Hudson Farms Fishing Access Project shall be implemented on lands adjacent to Ninemile Creek between Amboy Dam and Onondaga Lake. See Figure L.

Project Description: The Ninemile Creek and Hudson Farms Fishing Access Project shall consist of the provision of public fishing rights along approximately 6.8 miles of streambank on Honeywell property, and establishing associated improvements for recreational anglers. The Ninemile Creek and Hudson Farms Fishing Access Project shall be conducted by Honeywell pursuant to a Restoration Work Plan developed in accordance with the requirements of Paragraph 21 of the Consent Decree.

Public Fishing Rights - Honeywell-Owned Properties: Public fishing rights along Ninemile Creek shall be provided on Honeywell-owned property in the following locations:

- Along both banks of Ninemile Creek from approximately the Pumphouse Road exit bridge off Interstate-695 South (near coordinates 43.078231, -76.227726), upstream to the CSX tracks near Airport Road (near coordinates 43.078832, -76.257580) (measuring approximately 3.9 miles of streambank);
- Along both banks of Ninemile Creek from approximately the Airport Road bridge (near coordinates 43.078926, -76.260860), upstream to where the north portion of the Honeywell Hudson Farms property ends across from Onondaga County Resource Recovery Agency (OCRRA) Amboy compost site (near coordinates 43.077249, -76.269507) (measuring approximately 1.2 miles of streambank);
- Along the east bank of Ninemile Creek from where the south portion of the Honeywell Hudson Farms property begins, upstream to where the Honeywell property ends approximately 600 feet downstream of the Route 173 (Warners Road) bridge (near coordinates 43.071235, -76.271702) (measuring approximately 0.4 mile of streambank); and
- Along both banks of an unnamed tributary to Ninemile Creek on the Hudson Farms property that extends from where the tributary enters the property at the northwest corner (near coordinates 43.081691, -76.270759) to the two locations where it discharges to Ninemile Creek – one near the Airport Road bridge over the CSX rail line (near coordinates 43.078958, -76.260931) and the other near the Hudson Lane bridge over Ninemile Creek (near coordinates 43.077670, -76.263648) (measuring approximately 1.3 miles of streambank).
- Locations other than those listed above may be selected by NYSDEC if any of these prove infeasible for the provision of public fishing rights.

Angler Parking: A gravel angler parking area measuring approximately 4,200 square feet shall be constructed on Honeywell property near the intersection of Armstrong Road and Airport Road (near coordinates 43.080995, -76.260956) or other acceptable location as approved by the Trustees. Walking access for anglers using the parking area shall be permitted along the currently existing access road up to the bridge over Ninemile Creek. In accordance with the

requirements of Paragraph 24 of the Consent Decree, an existing angler parking area and public access to the parking area located on Honeywell Hudson Farms property off Airport Road (near coordinates 43.077392, -76.263446) shall be transferred to the State of New York or another interested non-governmental entity, with the approval of the Trustees, to provide for continued angler access.

Canoe Launch: The canoe launch located at the Pumphouse Road parking area shall be re-opened at its current location or re-located to a location provided by Honeywell and acceptable to the Trustees, and public use shall be permitted for a minimum of 5 years.

17. OUTLET JETTY ENHANCEMENT PROJECT - Improve Outlet Jetties for Angler and Pedestrian Access

Project Location: The Outlet Jetty Enhancement Project shall be implemented at the area of the existing jetties at the outlet at the northern end of Onondaga Lake. See Figure M.

Project Description: The Outlet Jetty Enhancement Project shall consist of work to improve the Onondaga Lake outlet jetties, subject to owner approval, to enhance recreational opportunities for anglers and pedestrians. The Outlet Jetty Enhancement Project shall be conducted by Honeywell pursuant to a Restoration Work Plan developed in accordance with the requirements of Paragraph 21 of the Consent Decree.

West Jetty Angler Access Enhancement: Existing gaps in the riprap in the west jetty shall be filled in with stone and gravel, or similar material as approved by the Trustees, to the extent possible. A paved walking path, measuring a minimum of 6 feet wide, shall be constructed and extend approximately 640 linear feet from the existing County Bike Trail to the west jetty. Onondaga County shall provide access to Honeywell over County-owned land for the purpose of constructing these improvements, including the trail component to be located on County-owned land.

East Jetty Enhancements: Existing gaps in the riprap in the east jetty shall be filled in with stone and gravel, or similar material as approved by the Trustees, along the length of the jetty that is located entirely in the outlet (measuring approximately 220 linear feet), to the extent possible. A deck of concrete, wood, or similar material shall be installed on top of the length of the jetty that is located entirely in the lake (measuring approximately 220 linear feet). Approximately 450 linear feet of 3.5-foot high railings shall be installed around the majority of the perimeter of the deck on the east jetty, subject to final design. An ADA-accessible 4-foot-wide aluminum gangway ramp with railings shall be installed to provide access from the top of the pedestrian walkway to the adjacent lawn area in Onondaga Lake Park east of the east jetty. An ADA-compliant walking path shall be installed to extend from the East Jetty to the County Park parking lot and shall be constructed in a manner consistent with existing Onondaga County park paths. Onondaga County shall provide access to Honeywell over County-owned land pursuant to an access agreement for the purpose of constructing these improvements, including the trail component to be located on County-owned land.

Project Maintenance: In accordance with Paragraph 34(a) of the Consent Decree, upon approval by the Trustees of Honeywell's Restoration Project Implementation Report for this Project, the County will (i) maintain the trail component of both the West Jetty Angler Access Enhancement and the East Jetty Enhancement for 25 years in a manner consistent with their purpose; and (ii) subject to owner's approval, maintain the jetty enhancements (excluding the underlying jetty structures) for 25 years in a manner consistent with the Project's purpose as may be authorized by the owner and agreed to by the County. Conservation of the County-owned property required for this Project shall be achieved by Onondaga County in accordance with the requirements set forth in Paragraph 36 of the Consent Decree.

18. BOAT LAUNCH PROJECT - Fund Acquisition of Property and Installation of a Boat Launch

Project Location: The Boat Launch Project #18 shall be implemented at a property to be identified at a suitable location to provide additional boating opportunities.

Project Description: The Boat Launch Project #18 shall consist of the acquisition and development of a property for use as a public boat launch. Boat Launch Project #18 shall be conducted by Honeywell pursuant to a Restoration Work Plan developed in accordance with the requirements of Paragraph 21 of the Consent Decree. In accordance with Paragraph 23 of the Consent Decree, Honeywell shall acquire, at a commercially reasonable price, fee title to a property that is acceptable to the Trustees. A concrete double boat ramp shall be constructed with a minimum 6-inch thickness and maximum slope of 15 percent as practicable. An approximately 50-foot floating boat dock shall be installed, and an approximately 5,000-square-foot gravel parking area shall be constructed on the property. In addition, an ADA-compliant platform shall be constructed alongside the boat launch. The design of the boat ramp and floating dock shall be consistent with NYSDEC standard practices for boat launches and will be subject to the Trustees' and the NYSDEC Division of Operations' review and approval. Upon Project completion, Honeywell shall transfer the property with installed boat ramp, ADA-compliant platform, and parking area to the State of New York, in accordance with the requirements of Paragraph 24 of the Consent Decree.

Project Maintenance: Project maintenance shall be provided by the State of New York upon transfer of the property.

19. PUBLIC FISHING ACCESS PROJECT -

Property Acquisition and Development for Parking Access; Provision of Funding for Public Fishing Rights along 3.4 Miles of Streambanks;

Project Location: The Public Fishing Access Project #19 shall be implemented on lands that provide adjacency for access to areas suitable for potential public fishing rights (“PFRs”).

Project Description: The Public Fishing Access Project #19 shall consist of acquiring a parcel of property, subject to the Trustees’ approval, for angler parking, and funding the acquisition of PFRs along approximately 3.4 miles of streambanks. Public Fishing Access Project #19 shall be conducted by Honeywell pursuant to a Restoration Work Plan developed in accordance with the requirements of Paragraph 21 of the Consent Decree.

Public Fishing Rights - Non-Honeywell Properties: In accordance with the requirements of Paragraph 14 of the Consent Decree, Honeywell shall pay to NYSDEC \$86,172 for funding the acquisition of PFRs on approximately 3.4 miles of privately held properties. The NYSDEC has complete discretion over the selection of properties on which PFRs may be acquired and the timing of such acquisition, provided that the funding for this Project is used to acquire PFRs.

Angler Parking: In accordance with Paragraph 23 of the Consent Decree, Honeywell shall acquire, at a commercially reasonable price, property subject to the Trustees’ approval, for use as an angler parking area for a minimum of 8 cars. This property shall be transferred to the State of New York in accordance with the requirements of Paragraph 24(c) of the Consent Decree.

Project Maintenance: Project maintenance shall be provided by the State of New York upon transfer of the property.

TABLES

TABLE 1 - SEED MIXES

Mix¹	Common name	Scientific name	Percent
Cover Crop²	Oats	<i>Avena sativa</i>	100
	Winter/Cereal rye	<i>Secale cereal</i>	100
Aquatic	Wild rice	<i>Zizania aquatic</i>	100
Obligate Wetland Mix	Water plantain	<i>Alisma subcordatum</i>	2
	Fringed (Nodding) sedge	<i>Carex crinite</i>	1
	Bladder (Star) sedge	<i>Carex intumescens</i>	1
	Hop sedge	<i>Carex lupulina</i>	5
	Lurid (Shallow) sedge	<i>Carex lurida</i>	15
	Blunt broom sedge	<i>Carex scoparia</i>	4
	Fox sedge	<i>Carex vulpinoidea</i>	15
	Wood reedgrass	<i>Cinna arundinacea</i>	3
	Virginia wildrye	<i>Elymus virginicus</i>	10
	Joe pye weed	<i>Eupatorium fistulosum</i>	1
	Spike rush	<i>Eleocharis palustris</i>	5
	Blueflag	<i>Iris versicolor</i>	0.5
	Soft rush	<i>Juncus effuses</i>	7
	Seedbox	<i>Ludwigia alternifolia</i>	0.5
	Softstem bulrush	<i>Schoenoplectus tabernaemontani</i>	2
	Green bulrush	<i>Scirpus atrovirens</i>	5
	Woolgrass	<i>Scirpus cyperinus</i>	2
	Many leaved bulrush	<i>Scirpus polyphyllus</i>	2
	Roughleaf goldenrod	<i>Solidago patula</i>	1
	Giant burreed	<i>Sparganium eurycarpum</i>	10
	Purplestem aster	<i>Symphotrichum puniceum</i>	1
	Broad-leaf cattail	<i>Typha latifolia</i>	7
Facultative Wetland Mix	Water plantain	<i>Alisma subcordatum</i>	1
	Big bluestem	<i>Andropogon gerardii</i>	2
	Swamp milkweed	<i>Asclepias incarnata</i>	1
	Bladder (Star) sedge	<i>Carex intumescens</i>	0.4
	Lurid (Shallow) sedge	<i>Carex lurida</i>	14
	Blunt broom sedge	<i>Carex scoparia</i>	3
	Fox Sedge	<i>Carex vulpinoidea</i>	20
	Wood reedgrass	<i>Cinna arundinacea</i>	3
	Showy ticktrefoil	<i>Desmodium canadense</i>	2
	Virginia wildrye	<i>Elymus virginicus</i>	10
	Joe pye weed	<i>Eupatorium fistulosum</i>	2
	Boneset	<i>Eupatorium perfoliatum</i>	1.5
	Pennsylvania smartweed	<i>Persicaria pensylvanica</i>	8

TABLE 1 - SEED MIXES

Mix¹	Common name	Scientific name	Percent
	Common sneezeweed	<i>Helenium autumnale</i>	2
	Soft rush	<i>Juncus effusus</i>	3
	Switchgrass	<i>Panicum virgatum</i>	8
	Ditch stonecrop	<i>Penthorum sedoides</i>	1
	Slender mountainmint	<i>Pycnanthemum tenuifolium</i>	0.1
	Green bulrush	<i>Scirpus atrovirens</i>	5
	Narrowleaf blue eyes grass	<i>Sisyrinchium angustifolium</i>	1
	New England aster	<i>Symphotrichum novae-angliae</i>	1
	Purplestem aster	<i>Symphotrichum puniceum</i>	1
	Broad-leaf cattail	<i>Typha latifolia</i>	7
	Blue Vervain	<i>Verbena hastata</i>	4
Floodplain Mix	Big Bluestem	<i>Andropogon gerardii</i>	17
	Swamp milkweed	<i>Asclepias incarnata</i>	2
	Lurid (Shallow) sedge	<i>Carex lurida</i>	12
	Showy ticktrefoil	<i>Desmodium canadense</i>	2
	Virginia wildrye	<i>Elymus virginicus</i>	20
	Joe pye weed	<i>Eupatorium fistulosum</i>	2
	Boneset	<i>Eupatorium perfoliatum</i>	2
	Common sneezeweed	<i>Helenium autumnale</i>	2
	Oxeye sunflower	<i>Heliopsis helianthoides</i>	2
	Soft rush	<i>Juncus effusus</i>	3
	Great blue lobelia	<i>Lobelia siphilitica</i>	1
	Wild bergamot	<i>Monarda fistulosa</i>	1
	Deertongue	<i>Panicum clandestinum</i>	20
	Switchgrass	<i>Panicum virgatum</i>	8
	Narrowleaf blue eyes grass	<i>Sisyrinchium angustifolium</i>	1
	Purplestem aster	<i>Symphotrichum puniceum</i>	1
	Blue Vervain	<i>Verbena hastata</i>	4
Conservation Seed Mix	Big bluestem	<i>Andropogon gerardii</i>	5
	Autumn bentgrass	<i>Agrostis perennans</i>	3.5
	Partridge pea	<i>Chamaecrista fasciculata</i>	5
	Showytick-trefoil	<i>Desmodium canadense</i>	5
	Canada wild rye	<i>Elymus Canadensis</i>	10
	Virginia wildrye	<i>Elymus virginicus</i>	8
	Joe pye weed	<i>Eupatorium fistulosum</i>	1
	Boneset	<i>Eupatorium perfoliatum</i>	2
	Common sneezeweed	<i>Helenium autumnale</i>	2
	Oxeye sunflower	<i>Heliopsis helianthoides</i>	2
	Soft rush	<i>Juncus effusus</i>	2
	Wild bergamot	<i>Monarda fistulosa</i>	0.5
	Deertongue	<i>Panicum clandestinum</i>	5

TABLE 1 - SEED MIXES

Mix¹	Common name	Scientific name	Percent
	Switchgrass	<i>Panicum virgatum</i>	20
	Black-eyed Susan	<i>Rudbeckia hirta</i>	5
	Little bluestem	<i>Schizachyrim scoparium</i>	5
	Wild senna	<i>Senna hebecarpa</i>	1
	Indian grass	<i>Sorghastrum nutans</i>	12
	Blue vervain	<i>Verbena hastata</i>	5
	Giant Ironweed	<i>Vernonia gigantea</i>	2
Upland Conservation Seed Mix	Autumn bentgrass	<i>Agrostis perennans</i>	3.0
	Big bluestem	<i>Andropogo gerardii</i>	15.0
	Common Milkweed	<i>Asclepias syriaca</i>	0.1
	Partridge pea	<i>Chamaecrista fasciculata</i>	5.0
	Showytick-trefoil	<i>Desmodiu canadense</i>	5.0
	Canada wild rye	<i>Elymus Canadensis</i>	10.0
	Virginia wildrye	<i>Elymus virginicus</i>	8.0
	Oxeye sunflower	<i>Heliopsis helianthoides</i>	2.0
	Deertongue	<i>Panicum clandestinum</i>	5.0
	Switchgrass	<i>Panicum virgatum</i>	25.0
	Black-eyed Susan	<i>Rudbeckia hirta</i>	5.0
	Little bluestem	<i>Schizachyrim scoparium</i>	5.0
	Indian grass	<i>Sorghastrum nutans</i>	11.9
	Black Cohosh	<i>Actaea racemosa</i>	1.1
Native Grasslands³	Ticklegrass	<i>Agrostis scabra</i>	6.6
	Autumn Bentgrass	<i>Agrostis perennans</i>	6.6
	Big Blue Stem	<i>Andropogon gerardii</i>	13.3
	Eastern Columbine	<i>Aquilegia canadensis</i>	0.5
	Butterflyweed	<i>Asclepias tuberosa</i>	0.5
	Big Leaf Aster	<i>Aster macrophyllus</i>	0.7
	Canadian Milkvetch	<i>Astragalus canadensis</i>	0.5
	Yellow False Indigo	<i>Baptisia tinctoria</i>	1.1
	Poverty Oat Grass	<i>Danthonia spicata</i>	6.6
	Virginia Wildrye	<i>Elymus virginicus</i>	2.7
	White avens	<i>Geum canadense</i>	0.3
	Round Head Lespedeza	<i>Lespedeza capitata</i>	0.3

TABLE 1 - SEED MIXES

Mix¹	Common name	Scientific name	Percent
	Switchgrass	<i>Panicum virgatum</i>	27.9
	Deertongue	<i>Panicum clandestinum</i>	4
	Smooth panicgrass	<i>Panicum dichotomiflorum</i>	5
	Virginia mountain-mint	<i>Pycnanthemum virginianum</i>	0.1
	Black-eyed Susan	<i>Rudbeckia hirta</i>	2
	Brown-eyed Susan	<i>Rudbeckia triloba</i>	0.7
	Little Blue Stem	<i>Schizachyrium schoparium</i>	5.3
	Wild Senna	<i>Senna hebecarpa</i>	2
	Silverrod	<i>Solidago bicolor</i>	0.5
	Canada Goldenrod	<i>Solidago canadensis</i>	0.5
	Wrinkled goldenrod	<i>Solidago rugosa</i>	0.5
	Indian Grass	<i>Sorghastrum nutans</i>	6.6
	Prairie Dropseed	<i>Sporobolus heterolepis</i>	0.8
	Heath Aster	<i>Symphyotrichum pilosum</i>	0.5
	Purpletop	<i>Tridens flavus</i>	3

1 The proposed seed mixes will be procured to the extent possible and are subject to availability of each species. Species that are not available will be replaced in kind with other species from the same seed mix. Trustees will be consulted if less than 50 percent of the species listed in any mix are available.

2 Oats shall be used for spring and summer seeding; winter rye for fall seeding after September 15.

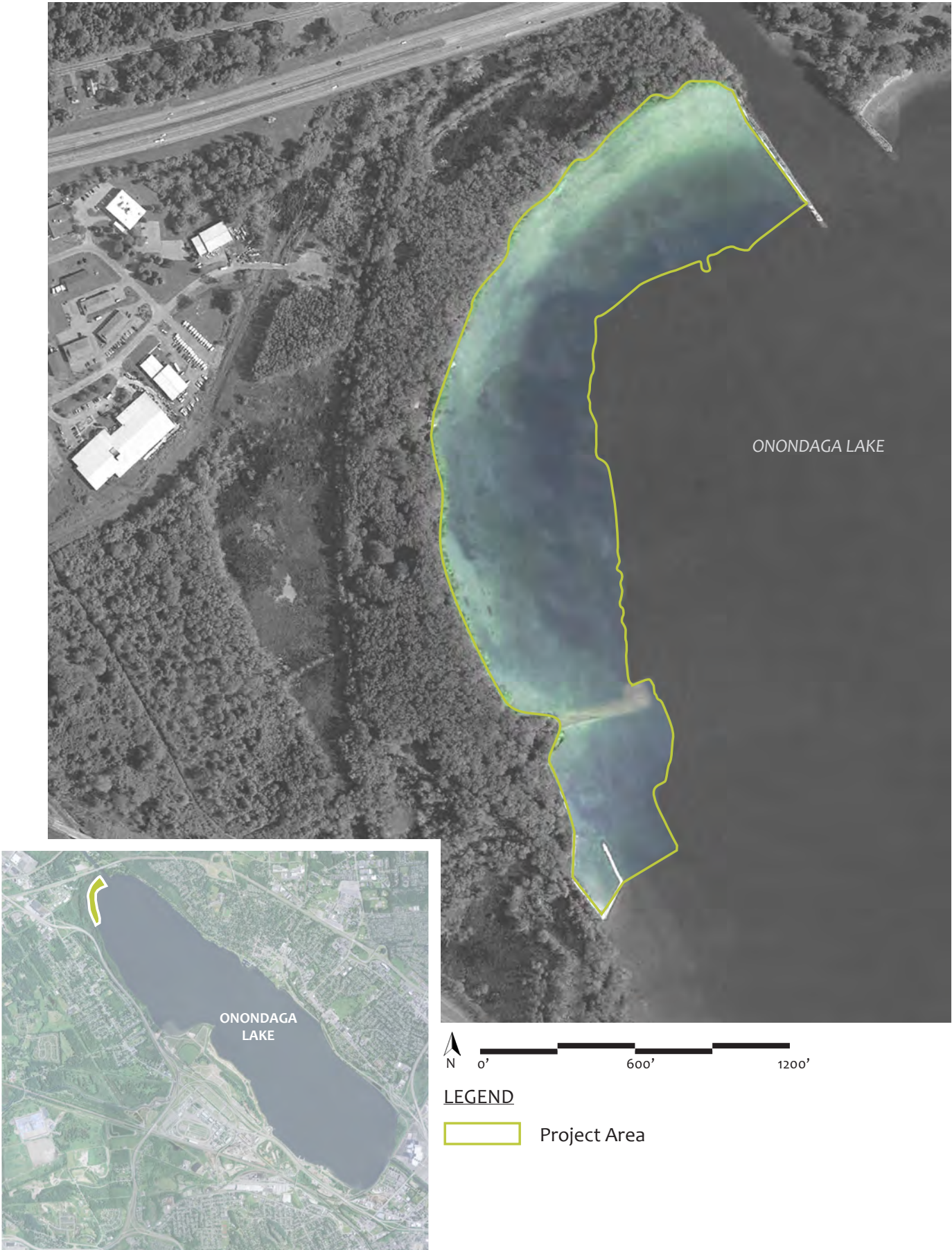
3 Preferred Native Grasslands seed mix, or such other mix as approved by the Trustees.

TABLE 2 - Planting Species		
Planting Area ¹	Proposed Species ¹	
	Common Name	Scientific Name
Emergent Wetlands	Sweetflag	<i>Acorus americanus</i>
	Water plantain	<i>Alisma subcordatum</i>
	Water sedge	<i>Carex aquatilis</i>
	Cosmos sedge	<i>Carex comosa</i>
	Fringed sedge	<i>Carex crinite</i>
	Meadow sedge	<i>Carex granularis</i>
	Lake sedge	<i>Carex lacustris</i>
	Hairy-fruited sedge	<i>Carex trichocarpa</i>
	Fox sedge	<i>Carex vulpinoidea</i>
	Water willow	<i>Decodon verticillatus</i>
	Spike rush	<i>Eleocharis palustris</i>
	Great mannagrass	<i>Glyceria grandis</i>
	Fowl mannagrass	<i>Glyceria striata</i>
	Sweetgrass	<i>Hierochloe odorata</i>
	Blueflag iris	<i>Iris versicolor</i>
	Soft rush	<i>Juncus effusus</i>
	Bayonet rush	<i>Juncus militaris</i>
	Willow weed	<i>Justicia americana</i>
	Smooth panic grass	<i>Panicum dichotomiflorum</i>
	Switchgrass	<i>Panicum virgatum</i>
	Arrow arum	<i>Peltandra virginica</i>
	Water smartweed	<i>Persicaria amphibia</i>
	Marsh smartweed	<i>Persicaria hydropiperoides</i>
	Curlytop knotweed	<i>Persicaria lapathifolium</i>
	Pennsylvania smartweed	<i>Persicaria pensylvanica</i>
	Pickerel-weed	<i>Pontederia cordata</i>
	Arrowhead	<i>Sagittaria latifolia</i>
	Deep water potato	<i>Sagittaria rigida</i>
	Lizard Tail	<i>Saururus cernuus</i>
	Hardstem bulrush	<i>Schoenoplectus acutus</i>
	Three-square	<i>Schoenoplectus americanus</i>
	Soft-stem bulrush	<i>Schoenoplectus tabernaemontani</i>
	Green bulrush	<i>Scirpus atrovirens</i>
	Eastern burreed	<i>Sparganium americanum</i>

TABLE 2 - Planting Species		
	Giant burreed	<i>Sparganium eurycarpum</i>
	Freshwater cordgrass	<i>Spartina pectinata</i>
	Purple stemmed aster	<i>Symphyotrichum puniceum</i>
	Broad-leaf cattail	<i>Typha latifolia</i>
Floating Aquatics	Watershield	<i>Brasenia schreberi</i>
	Yellow water lily	<i>Nuphar variegata</i>
	White water lily	<i>Nymphaea odorata</i>
Streambanks	Button bush	<i>Cephalanthus occidentalis</i>
	Silky dogwood	<i>Cornus amomum</i>
	Peach-leaf willow	<i>Salix amygdaloides</i>
	Pussy willow	<i>Salix discolor</i>
	Sandbar willow	<i>Salix interior</i>
	Black willow	<i>Salix nigra</i>
	Silky willow	<i>Salix sericea</i>
	American sycamore	<i>Platanus occidentalis</i>
	Red maple	<i>Acer rubrum</i>

1 The proposed lists will be procured to the extent possible and is subject to nursery availability. The Trustees will be consulted if less than 80 percent of the species are available.

FIGURES












LEGEND

-  Area for Additional Habitat Structures outside of Remediation Areas
-  Area for Additional Habitat Structures within Remediation Areas
-  Onondaga Lake Remediation Area Limits

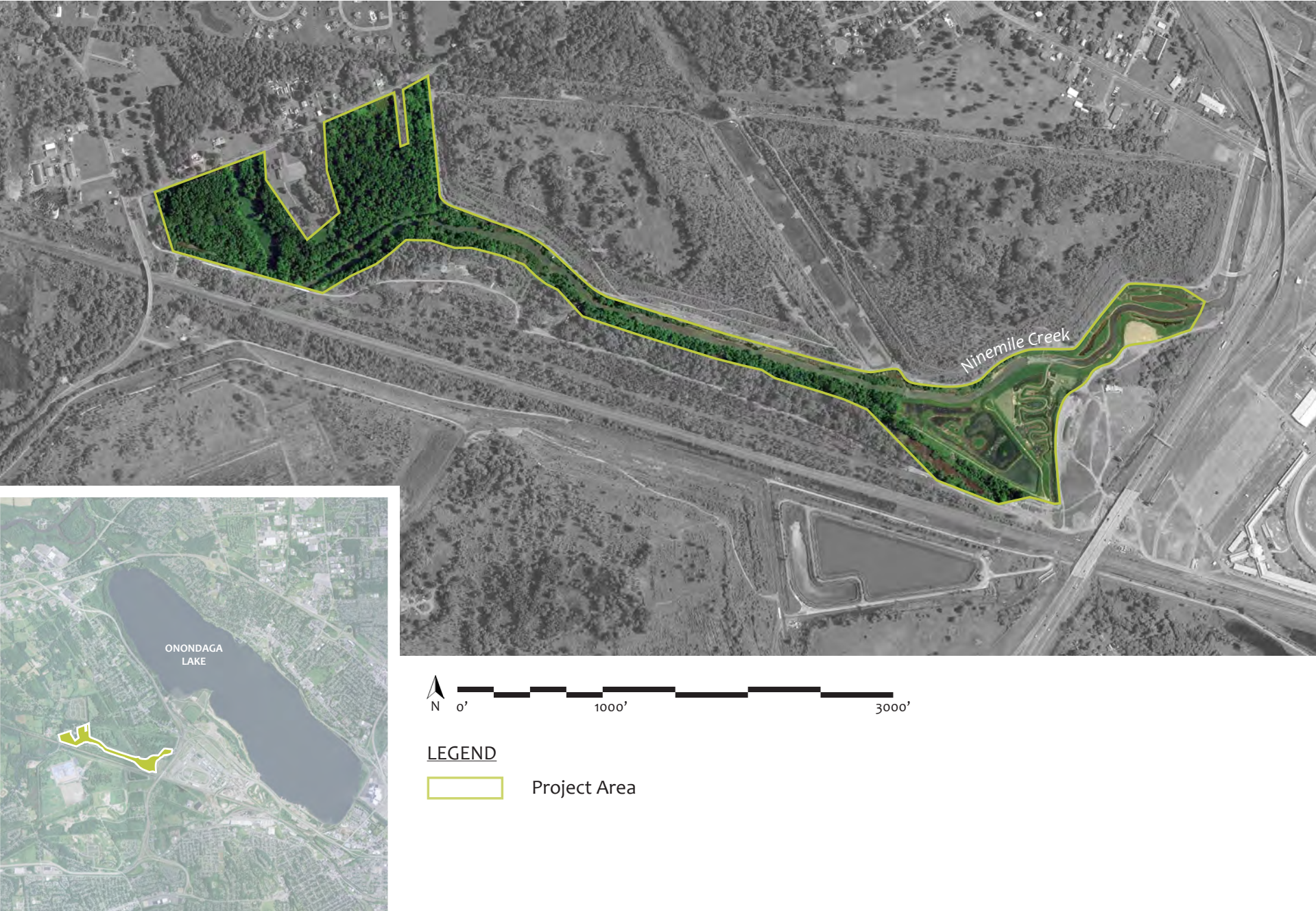




LEGEND


 Project Area







LEGEND

 Project Area





TULLY RECREATIONAL AREA AND NATURE
PRESERVE PROJECT (NORTH FOREST)

Figure H2



LEGEND



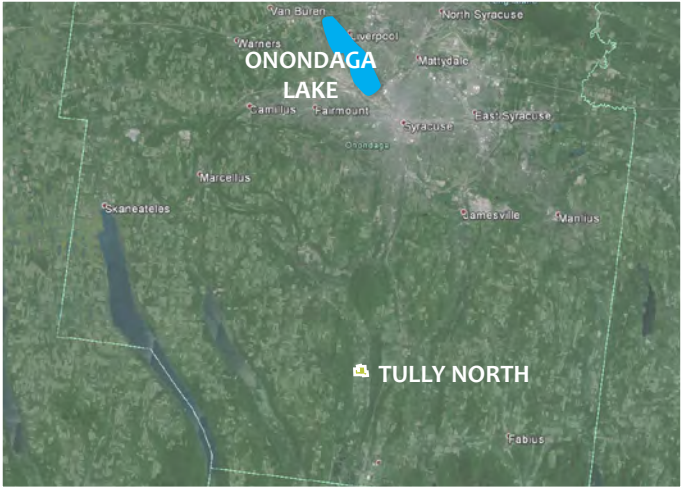
Project Area



Public Fishing Rights



Proposed Public Parking



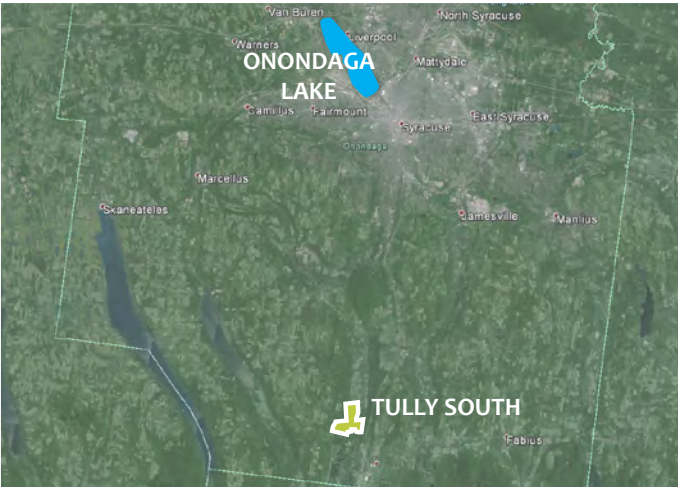
TULLY RECREATIONAL AREA AND NATURE PRESERVE PROJECT (SOUTH FOREST)

Figure H3









LEGEND

- Project Area
- Public Fishing Rights
- Existing Public Parking
- Proposed Public Parking





LEGEND

-  Project Area
-  Tentative Trail Route
-  On Street Bike Trail
-  Existing Erie Canal Trailway
-  Public Road Crossing
-  Existing Public Parking
-  Proposed Public Parking

NOTE:
Trail path and parking area location are conceptual and are subject to change prior to implementation

SOUTHWEST SHORE RECREATION TRAIL & SOUTHWEST SHORE ANGLER ACCESS

Figure J



LEGEND

- Project Area
- Southwest Shore Angler Access
- Tentative SW Shore Trail
- Public Parking
- Proposed Public Parking (10,000 sq. ft.)

NOTE:

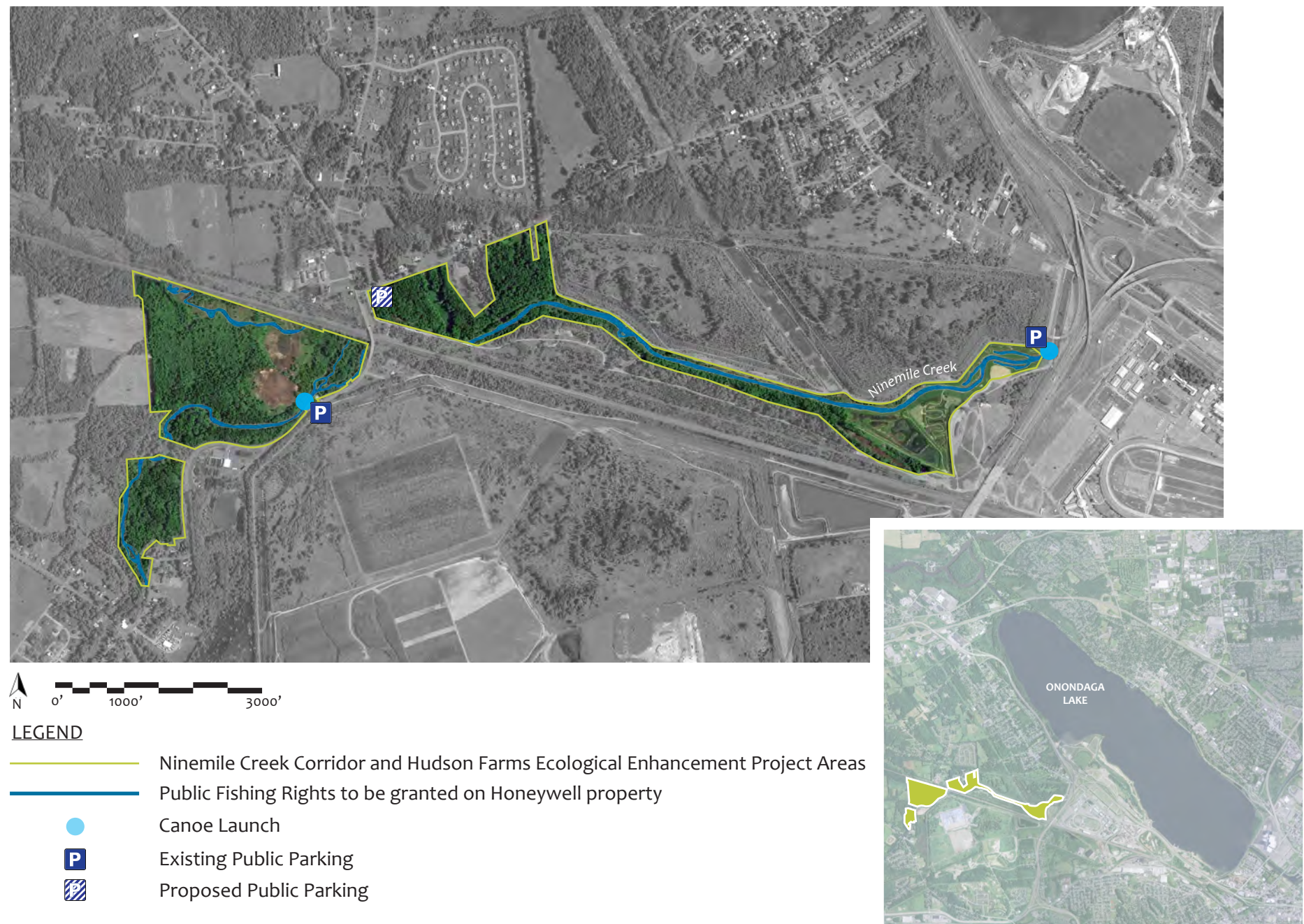
Trail path and parking areas location are conceptual and are subject to change prior to implementation



DEEP WATER FISHING PIER PROJECT

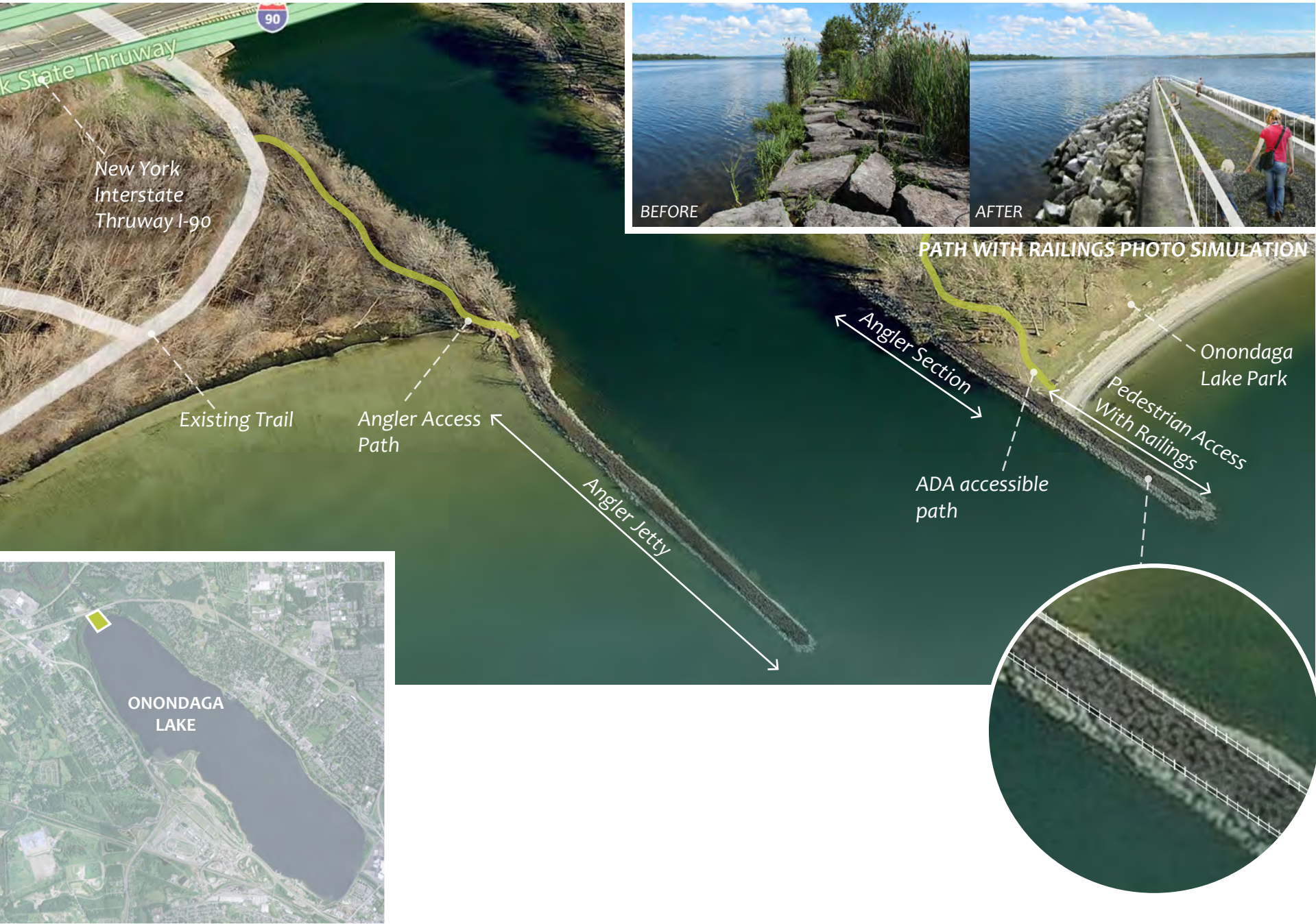
Figure K



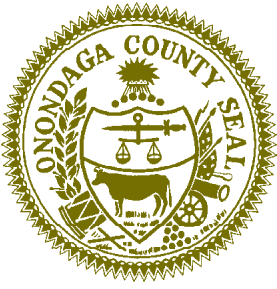


OUTLET JETTY ENHANCEMENT PROJECT

Figure M



ONONDAGA COUNTY PEST MANAGEMENT AND CONTROL POLICY



**OFFICE OF THE COUNTY EXECUTIVE
ONONDAGA COUNTY**

Nicholas J. Pirro

Nicholas J. Pirro
County Executive

POLICY/PROCEDURE MEMO

No. 98-2 Subject: Pest Management and Control

Date: April 9, 1998 Page 1 of 2 pages.

EXECUTIVE ORDER
ESTABLISHING A POLICY ON PEST MANAGEMENT AND CONTROL

WHEREAS, in consideration of the necessity to balance the need to control harmful and nuisance pests with the potential hazards involved in the use of chemical pesticides, the

County of Onondaga deems it prudent to employ pest control strategies which are the least hazardous to human health and the environment; and

WHEREAS, the concept of integrated pest management (IPM) promotes pest control strategies which are the least hazardous to human health and the environment by placing

priority on the prevention of pest problems without undue reliance on the use of chemical pesticides; and

WHEREAS, the County of Onondaga is in a position to promote, by example and action, the use of alternatives to chemical pesticides to all residential, municipal, commercial and industrial sectors of the County;

NOW THEREFORE, NICHOLAS J. PIRRO, as County Executive of the County of Onondaga does hereby order and direct each and every Department, Board, Agency and

Commission of the County of Onondaga, under his jurisdiction, as follows:

It is hereby declared to be the policy of the County of Onondaga to use "integrated pest management" as the preferred method of pest control, and to minimize to the greatest

extent practical the use of chemical pest controls and thereby reduce the health and environmental risks associated with pest control.

Integrated pest management shall mean the use of a variety of economical and environmentally sensitive strategies to prevent and to control pests. These strategies shall

employ non-toxic or where necessary and in the public interest the least toxic means available to accomplish pest control. These strategies shall include but shall not be limited

to: 1) regular monitoring and evaluation so as to enable early detection; 2) mechanical controls such as manual removal, barriers, and traps; 3) biological controls; and 4) least

toxic chemical controls where pesticides are deemed necessary. These strategies shall minimize the reliance upon routine application of chemical pesticides while maximizing

the use of other preventive and responsive measures.

County officers and employees and persons under contract to the County shall use the following as guidelines regarding the use of chemical pesticides:

1. All Federal, State and local laws pertaining to the use of pesticides must be complied with.
2. To facilitate such compliance it shall be the responsibility of each County Department and agency involved in the use of chemical pesticides to establish internal policies and procedures as may be needed to assure that detailed records of chemical pesticide use are generated and maintained. Such records shall be kept as active files by each department and agency for a period of at least three (3) years. Such records shall detail the purpose for using the chemical pest control, the target organism, the name of the chemical pest control, the EPA registration number, and the date and the location of the use of the chemical pesticides. A copy of all such records will be provided annually to the County Health Department, Division of Environmental Health, no later than February 1st of each year and shall be kept by the Health Department for a period of ten (10) years.
3. All departments that employ pest control measures shall designate an Integrated Pest Management Coordinator to ensure adherence to the County's pest control policy objectives.
4. Chemical pesticides should be purchased and used by the County only where feasible alternatives are not available.
5. Any chemical pesticide used should have the least acute and chronic toxic effects of possible choices available to achieve necessary levels of control. The County Health Department, upon request, will assist departments in identifying chemical pesticides that have the least acute and chronic toxic affects.
6. All County officers and employees engaged in the application of chemical pesticides shall be trained and certified, or will be under the supervision of individuals trained and certified in conformity with State and Federal regulations.
7. It shall be the responsibility of each contractor to ensure that all persons under contract to the County engaged in the application of chemical pesticides shall be trained and certified in conformity with State and Federal regulations. This requirement will be a contractual obligation in each such contract entered into after the effective date of this Executive Order.
8. Pest management contracts entered into after the effective date of this Executive Order must clearly specify that it is the County's intent to minimize the reliance upon routine application of pesticides while maximizing the use of other preventive and responsive pest control measures. Such contracts will include performance standards based on the elimination or control of infestations to acceptable levels, and not upon the number of pesticide applications.
9. Use of least toxic chemical controls, when deemed necessary and in the public interest, should be applied to affected areas only and in a site-specific manner and only in kinds, rates and amounts necessary to adequately control target pests under given circumstances.
10. Individuals who request it shall have access to information about the chemical pesticide(s) in use subject to any restriction, terms and conditions of applicable state and federal laws governing the release of such information.

This Executive Order shall take effect immediately and shall remain in effect unless revoked or modified by the County Executive.